

Rochester Institute of Technology

RIT Digital Institutional Repository

Articles

Faculty & Staff Scholarship

3-5-2009

The Nuclear Star Cluster of the Milky Way: Proper Motions and Mass

Rainer Schödel

Instituto de Astrofísica de Andalucía

David Merritt

Rochester Institute of Technology

Andreas Eckart

Universität zu Köln

Follow this and additional works at: <https://repository.rit.edu/article>

Recommended Citation

The nuclear star cluster of the Milky Way: proper motions and mass R. Schödel, D. Merritt and A. Eckart
A&A, 502 1 (2009) 91-111 DOI: <https://doi.org/10.1051/0004-6361/200810922>

This Article is brought to you for free and open access by the RIT Libraries. For more information, please contact repository@rit.edu.

The nuclear star cluster of the Milky Way: Proper motions and mass

R. Schödel¹, D. Merritt², and A. Eckart³

¹ Instituto de Astrofísica de Andalucía (IAA) - CSIC, Camino Bajo de Huétor 50, E-18008 Granada, Spain
e-mail: rainer@iaa.es

² Department of Physics and Center for Computational Relativity and Gravitation, Rochester Institute of Technology, Rochester, NY 14623, USA
e-mail: merritt@astro.rit.edu

³ I. Physikalisches Institut, Universität zu Köln, Zùlpicher Str.77, 50937 Köln, Germany
e-mail: eckart@ph1.uni-koeln.de

ABSTRACT

Context. Nuclear star clusters (NSCs) are located at the photometric and dynamical centers of the majority of galaxies. They are among the densest star clusters in the Universe. The NSC in the Milky Way is the only object of this class that can be resolved into individual stars. The massive black hole Sagittarius A* is located at the dynamical center of the Milky Way NSC.

Aims. In this work we examine the proper motions of stars out to distances of 1.0 pc from Sgr A*. The aim is to examine the velocity structure of the MW NSC and acquire a reliable estimate of the stellar mass in the central parsec of the MW NSC, in addition to the well-known black hole mass.

Methods. We use multi-epoch adaptive optics assisted near-infrared observations of the central parsec of the Galaxy obtained with NACO/CONICA at the ESO VLT. Stellar positions are measured via PSF fitting in the individual images and transformed into a common reference frame via suitable sets of reference stars.

Results. We measured the proper motions of more than 6000 stars within ~ 1.0 pc of Sagittarius A*. The full data set is provided in this work. We largely exclude the known early-type stars with their peculiar dynamical properties from the dynamical analysis. The cluster is found to rotate parallel to Galactic rotation, while the velocity dispersion appears isotropic (or anisotropy may be masked by the cluster rotation). The Keplerian fall-off of the velocity dispersion due to the point mass of Sgr A* is clearly detectable only at $R \lesssim 0.3$ pc. Nonparametric isotropic and anisotropic Jeans models are applied to the data. They imply a best-fit black hole mass of $3.6^{+0.2}_{-0.4} \times 10^6 M_{\odot}$. Although this value is slightly lower than the current canonical value of $4.0 \times 10^6 M_{\odot}$, this is the first time that a proper motion analysis provides a mass for Sagittarius A* that is consistent with the mass inferred from orbits of individual stars. The point mass of Sagittarius A* is not sufficient to explain the velocity data. In addition to the black hole, the models require the presence of an extended mass of $0.5 - 1.5 \times 10^6 M_{\odot}$ in the central parsec. This is the first time that the extended mass of the nuclear star cluster is unambiguously detected. The influence of the extended mass on the gravitational potential becomes notable at distances $\gtrsim 0.4$ pc from Sgr A*. Constraints on the distribution of this extended mass are weak. The extended mass can be explained well by the mass of the stars that make up the cluster.

Key words. Galaxy: center – Galaxy: nucleus – stability of gas spheres – Galaxy: stellar content – Galaxy: structure – (ISM:): dust, extinction

1. Introduction

After a decade of sensitive high resolution imaging with the *Hubble Space Telescope* the presence of nuclear star clusters (NSCs) at the centers of most galaxies has become a well established observational fact (Phillips et al. 1996; Carollo et al. 1998; Matthews et al. 1999; Côté et al. 2006). NSCs have typical effective radii of a few pc, luminosities of $10^6 - 10^7 L_{\odot}$, and masses of a few times 10^5 to $10^7 M_{\odot}$ (e.g. Walcher et al. 2005; Ferrarese et al. 2006). NSCs are the densest known star clusters in the Universe. Most NSCs contain a mixed stellar population with signs of repeated episodes of star formation (Walcher et al. 2006). Recent research suggests that there exists a fundamental relation between NSCs, supermassive black holes, and their host galaxies (Wehner & Harris 2006; Ferrarese et al. 2006; Balcells et al. 2007; Seth et al. 2008b), similar to the relations between bulge luminosity, mass, or velocity dispersion and supermassive black hole masses (Kormendy & Richstone 1995; Ferrarese & Merritt 2000; Gebhardt et al. 2000; Tremaine et al. 2002; Häring

& Rix 2004). The causes for these correlations are not understood, which emphasizes our need to obtain a better understanding of these objects. Unfortunately, NSCs are compact sources and therefore barely resolved in external galaxies at the diffraction limit of current 8-10 m-class and even future 30-50 m-class telescopes. Any conclusions on the structure and mass of extragalactic NSCs therefore have to be based on the properties of the integrated light of millions of stars.

Located at a distance of only 8 kpc (Reid 1993; Eisenhauer et al. 2005; Groenewegen et al. 2008; Ghez et al. 2008; Trippe et al. 2008; Gillessen et al. 2008), the center of the Milky Way (Galactic Center, GC) offers the best possibility to study an NSC in detail. The GC is obscured by about 30 magnitudes of visual extinction and can therefore only be studied in infrared wavelengths (first pioneering observations by Becklin & Neugebauer 1968). Launhardt et al. (2002) studied the nuclear bulge of the Milky Way using COBE DIRBE data. They identified the NSC of the Milky Way (MW) and estimated its mass as $3.5 \pm 1.5 \times 10^7 M_{\odot}$. The MW NSC is close to isothermal, with

a power-law index around 1.8 (Becklin & Neugebauer 1968; Catchpole et al. 1990; Haller et al. 1996; Eckart et al. 1993). Genzel et al. (2003) showed that the MW NSC contains a central stellar *cusp* and no flat core. Schödel et al. (2007) found that the cusp is very small (with a projected cusp radius of 0.22 ± 0.04 pc) and rather flat, with a power-law index of just 1.2 ± 0.05 . It would be extremely difficult – if not impossible – to resolve this small cusp in any extragalactic system, even with 50m-class telescopes. The cusp region is observationally dominated by the presence of a population of young, massive stars. Their surface density follows a power-law with $\Sigma \propto R^{-2}$ (Paumard et al. 2006; Lu et al. 2008), while the surface density of the late-type stellar population is almost constant in the cusp region (Buchholz, Schödel, & Eckart, submitted to A&A).

Like NSCs in external galaxies the Milky Way NSC consists of a mixed, old and young stellar population. Several periods of star formation have occurred in the MW NSC. The most recent star burst happened just a few million years ago (e.g., Allen et al. 1990; Krabbe et al. 1995; Paumard et al. 2006; Maness et al. 2007).

Studies of stellar dynamics have provided striking evidence for the existence of a supermassive black hole at the dynamical center of the MW NSC (see Eckart & Genzel 1996; Ghez et al. 2000; Genzel et al. 2000). The measurements of stellar orbits have provided, so far, the best evidence for its nature (e.g., Schödel et al. 2003; Ghez et al. 2003). Recent work on the orbit of the star S2/S02 gives, so far, the most accurate measurement of the mass of the black hole ($\sim 4 \times 10^6 M_\odot$) (Eisenhauer et al. 2005; Ghez et al. 2005, 2008; Gillessen et al. 2008). While some extragalactic surveys can give the impression that NSCs and supermassive black holes may be mutually exclusive (Ferrarese et al. 2006), the case of the GC and of galaxies containing both AGN and NSCs (Seth et al. 2008a) demonstrates that an NSC and a supermassive black hole can co-exist.

While the mass of the supermassive black hole, Sagittarius A* (Sgr A*), at the GC has been determined with high accuracy, this is not the case for the mass and mass density of the star cluster around Sgr A*, for which there exists a large uncertainty. For example, the data presented by Haller et al. (1996) are consistent with a stellar mass between 0 and a few $10^6 M_\odot$ within 1 pc of Sgr A*. The main problem here is the lack of sufficiently large samples of stellar proper motion or line-of-sight (LOS) velocity measurements at distances sufficiently far from Sgr A* so that the velocity dispersion is not completely dominated by its mass ($r \gtrsim 0.5$ pc), but sufficiently close to Sgr A* in order to measure stars well within the NSC ($r \lesssim 2 - 3$ pc) and thus to avoid significant contamination by stars in the nuclear disk, bulge, or foreground.

Due to the lack of data, estimates of the enclosed mass profile at the GC were up to now heavily influenced by modeling assumptions, such as adopting some *ad hoc* value for the velocity dispersion at large distances, or by estimates of the enclosed stellar and BH mass based on measurements of gas velocities (e.g., Genzel et al. 1996; Schödel et al. 2002). Schödel et al. (2007) have re-analyzed this issue and concluded that the mass of the star cluster in the central parsec is possibly significantly higher than previously assumed. Their claim is based on observational data that indicate that the measured line-of-sight velocity dispersion of late type stars within ~ 0.8 pc of Sgr A* remains apparently constant, with a value around 100 km s^{-1} (Figer et al. 2003; Zhu et al. 2008). This contrasts with the expectation that the velocity dispersion would show a Keplerian decrease over the entire central parsec if only the BH point mass were important. Additionally, Reid et al. (2007) found that the mass of Sgr A*

is not sufficient to keep the maser star IRS 9 on a bound orbit and that this may imply the existence of several $10^5 M_\odot$ of extended mass within $r \approx 0.3$ pc of the black hole. This appears to contradict earlier mass estimates, like the ones mentioned above, that indicate a negligible amount of extended mass within 1 pc of Sgr A*. Using the measured radial velocity dispersions of late type stars in the central parsec in combination with the density profile of the NSC Schödel et al. (2007) provide a simple model (using the Bahcall-Tremaine mass estimator and assuming no rotation, isotropy, and that the velocity dispersion stays constant beyond the central parsec, where it was measured,) of enclosed mass vs. distance from Sgr A* that is consistent with up to a few $10^6 M_\odot$ of extended mass within 1 pc of Sgr A*. The key difference to mass profiles presented in earlier works is the realization that the projected velocity dispersion follows a clear Kepler-law only out to projected distances $R \lesssim 0.3$ pc from Sgr A*, but remains apparently constant at $R \gtrsim 0.5$ pc.

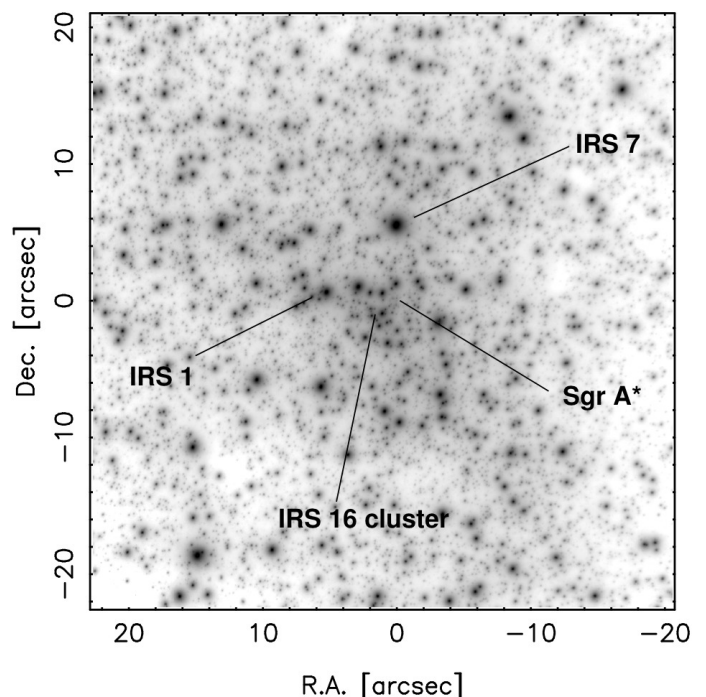


Fig. 1. Mosaic image of the observations from 1 June 2006. A logarithmic gray scale has been adopted. The positions of IRS 7 and Sgr A* are indicated. North is up and east is to the left. Offsets in arcseconds from Sgr A* are indicated. Note that this mosaic image is only roughly astrometric. A constant pixel scale of $0.027''$ per pixel has been assumed. Any residual net rotation of the image derotator has not been determined, i.e. the image may have a non-zero rotation angle (< 1 deg). This may lead to offsets of up to a few tenths of arcseconds near the edge of the field.

The mass and mass density of the nuclear star cluster around Sgr A* is of great importance for understanding the dynamics of this complex system. It can have strong implications for topics such as star formation, the rate of stellar collisions, the relaxation time, cusp and black hole growth, and the rate of gravitational wave emission events (for an overview of stellar processes near massive black holes, see, e.g. Alexander 2007). In order to provide reliable estimates of the mass of the MW NSC we therefore present in this work a comprehensive sample of stellar proper motions within ~ 1 pc of Sgr A*. The new data allow us

to present accurate estimates of the enclosed mass vs. distance at the center of the Milky Way.

Sections 2, 3, 4, and 5 are largely technical and describe the data processing and how the proper motions of stars in the GC were derived. Readers who are primarily interested in the main results of our analysis, can go directly to section 6.

2. Observations and data reduction

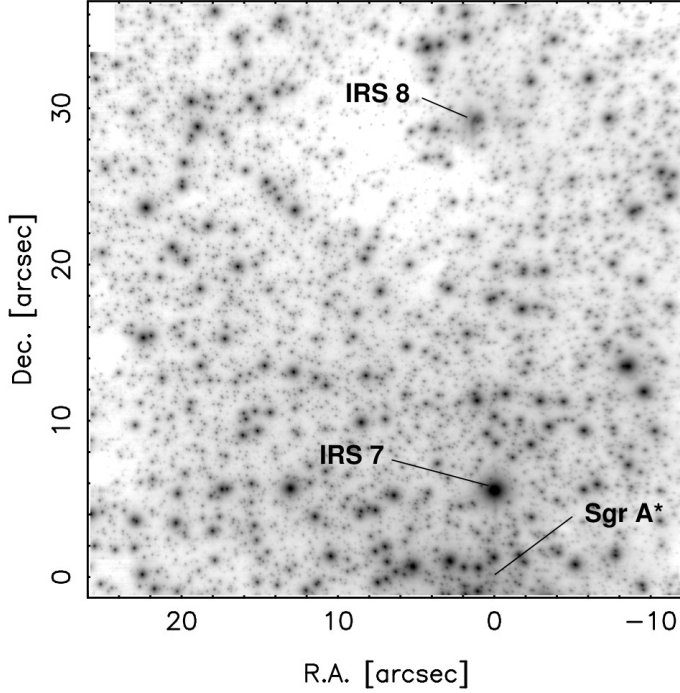


Fig. 2. Mosaic image of the observations from 28 May 2008. The center of the image is offset about $20''$ NE from Sgr A*. A logarithmic gray scale has been adopted. The positions of IRS 7, Sgr A*, and of the young and massive star IRS 8, that is surrounded by a bow-shock (Geballe et al. 2006), are indicated. North is up and east is to the left. Offsets in arcseconds from Sgr A* are indicated. Please note that this mosaic image is only roughly astrometric (see comments in caption of Fig. 1)

The imaging data used in this work were obtained with the near-infrared (NIR) camera and adaptive optics (AO) system CONICA/NAOS (short: NaCo) at the ESO VLT unit telescope 4¹. For images centered on Sgr A* the $\text{mag}_{K_s} \approx 6.5 - 7.0$ supergiant IRS 7 was used to close the loop of the AO, using the unique NIR wavefront sensor NAOS is equipped with. A guide star with $\text{mag}_V \approx 14.0$ located $\sim 19''$ NE of Sgr A* was used as reference for the AO for the images offset from Sgr A*. The sky background was measured on a largely empty patch of sky, a dark cloud about $400''$ north and $713''$ east of the GC. Data reduction was standard, with sky subtraction, bad pixel correction, and flat fielding. The field-of-view (FOV) of a single exposure is $28'' \times 28''$. The observations were dithered (either applying a fixed rectangular pattern or a random pattern) in order to cover a FOV of about $40'' \times 40''$.

¹ Based on observations collected at the European Southern Observatory, Chile, programs 071.B-0077, 073.B-0085, 073.B-0745, 073.B-0775, 075.B-0093, 075.C-0138, 077.B-0552, 081.B-0648

Table 1. Details of the imaging observations used in this work. DIT is the detector integration time, NDIT is the number of integrations that were averaged on-line by the read-out electronics, N is the number of (dithered) exposures (terminology of ESO observations). The total integration time of each observation amounts to $N \times \text{NDIT} \times \text{DIT}$. The pixel scale of all observations is $0.027''$ per pixel.

Date	$\lambda_{\text{central}} [\mu\text{m}]$	$\Delta\lambda [\mu\text{m}]$	N	NDIT	DIT [s]
03 May 2002	2.18	0.35	20	3	20
10 May 2003	2.18	0.35	19	120	0.5
12 June 2004	2.06	0.06	96	1	30
12 June 2004	2.24	0.06	99	1	30
13 June 2004	2.33	0.06	119	1	30
13 May 2005	2.18	0.35	103	60	0.5
29 April 2006	1.66	0.33	32	28	2
29 April 2006	2.18	0.35	32	28	2
01 June 2006	2.18	0.35	80	3	10
28 May 2008	2.18	0.35	35	4	10
28 May 2008	2.18	0.35	20	2	20
offset fields					
11 Aug 2004	2.18	0.35	16	3	40
27 July 2005	2.18	0.35	8	4	15
28 May 2008	2.18	0.35	20	20	2

The majority of the images were taken by dithering around a position roughly centered on Sgr A*. These data will be referred to in this article as the *center data set*. There are three observations that were centered on a field roughly $20''$ NE of Sgr A*, the *offset data set*. Those images were used for determining the velocity dispersion in the MW NSC at projected distances from Sgr A* out to 1.15 pc. The pixel scale of all NaCo data used in this work is $0.027''$ per pixel. Details of the observations are listed in Table 1. Mosaic images of the two observed fields are shown in Figs. 1 and 2.

3. Photometry and astrometry

For accurate error assessment and in order to avoid any additional errors introduced by the mosaicing process, we did not combine the individual frames into mosaic images. Photometry and astrometry were instead done on individual exposures. This allowed us to compare multiple independent measurements for each star at each epoch. The number of individual frames per epoch is listed in column 4 of Table 1. The PSF fitting program package *StarFinder* (Diolaiti et al. 2000) was used. Since the $28'' \times 28''$ (1024×1024 pixel) field-of-view (FOV) of the NaCo S27 camera, that was used for all observations, is larger than the isoplanatic angle of near-infrared adaptive optics observations ($\leq 10 - 15''$), the images were divided into sub-frames of $\sim 7'' \times 7''$ size, i.e. with angular diameters smaller than the isoplanatic angle. PSF extraction, followed by astrometry and photometry was done on each of the individual sub-frames. In order to minimize any uncertainties related to PSF extraction, each image was divided by a rectangular pattern in many overlapping sub-frames. The step size between the mid-points of the sub-frames was chosen as half the width of the sub-frames.

PSF extraction was done by identifying all suitable PSF reference stars within each sub-frame (all potential PSF reference stars for the entire FOV were marked previously by hand on a large mosaic image). The noise for each sub-frame was determined from the read-out and photon noise (algorithm provided by *StarFinder*). In order to improve the PSF, the *StarFinder* algorithm was run once on the sub-frame with a detection thresh-

old of 20σ . PSF extraction was then repeated. Since the quality of the PSF deteriorates in the wings, the PSF had to be truncated. We used a circular mask with radius 20 pixel (about 6 times the FWHM of the PSF). The *StarFinder* algorithm was then applied to the sub-frame, using two iterations with a 3σ threshold and a correlation threshold of 0.7.

Measurements of stars in overlapping sub-frames were averaged. With the exception of the stars near the edge of the field, there were 4 measurements of each source. The uncertainties derived from these measurements were smaller than the formal uncertainties of the PSF fitting routine.

The cores of saturated sources were repaired during the PSF extraction process. The detected stars have magnitudes $\text{mag}_{K_s} \geq 17.5$. Any spurious sources that may still be present in the data at this point were eliminated later when merging the source lists of the various exposures for each epoch after alignment with the reference frame. Each star had to be detected in multiple exposures (see appendix A).

4. Transformation into a common reference frame

Since there is no absolute frame of reference available for determining the proper motions of stars at the GC, one has to transform the stellar positions into a common reference frame using a large number of stars with either known proper motions or with the assumption that their motions cancel on average. The problem has been described previously in various publications, e.g., Eckart & Genzel (1997) or Ghez et al. (1998).

In this work, we present proper motions on a much larger FOV than what has been published on the GC before (but see also Trippe et al. 2008, which appeared shortly before this work). The large FOV means that significant dither offsets from the initial pointing (of the order $6'' - 8''$) had to be applied. Since this implies that stars come to lie on different areas of the detector, camera distortions may become of considerable importance in this case. Therefore, special care has to be taken when aligning all stellar positions to a common reference frame. This procedure is key to obtaining accurate proper motion measurements. For the sake of repeatability of the experiment we consider it important to describe our applied methodology in detail. However, since this is a largely technical issue that may not be of interest to many readers, we describe this procedure in appendix A.

5. Proper motions

5.1. Center field

After alignment of the stars into a common reference frame, stars were matched by searching within a circle of 2 pixels radius around the position in the reference frame. This radius is smaller than the FWHM of the AO data, which avoids mismatching. It is large enough in order to detect stars with proper motion velocities up to 500 km s^{-1} in each coordinate. Sources with proper motions exceeding this value would be missed by this analysis, but should be extremely rare (see histogram in Fig. 10). Sources with such high velocities can easily be detected by visual inspection of images taken about 2 years apart. We did not find such fast moving sources in a visual inspection (limited to $\text{mag}_K \approx 16$) of the images. Matching of the stars within $1''$ of Sgr A*, where source density is highest and proper motion velocities exceed several hundred km s^{-1} was done manually. Proper motions were subsequently determined by linear fits to the measured positions vs. time. In order to be included in our proper motion sample, a star had to be detected in at least

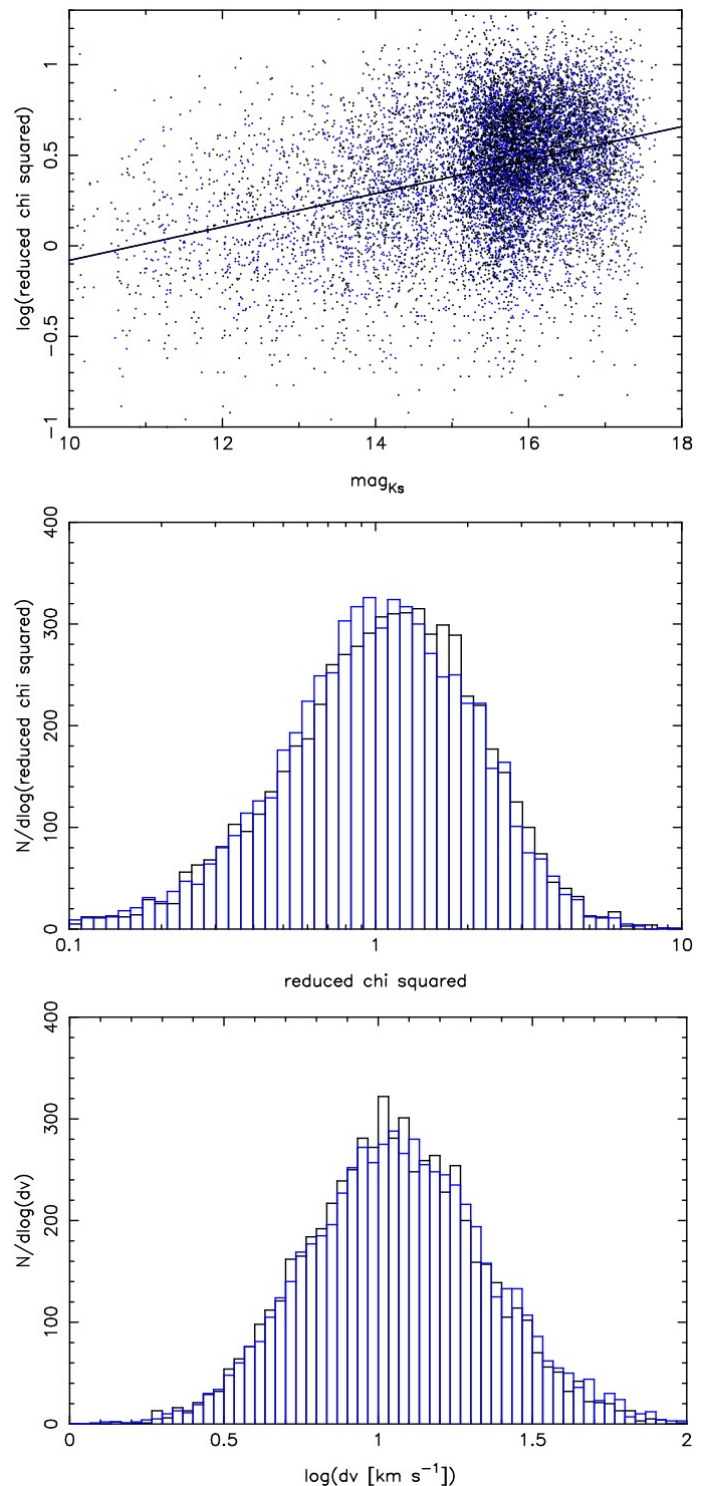


Fig. 3. Error analysis for center field data. Top: Plot of $\log(\chi_{red}^2)$ vs. K_s -band magnitude. The straight line is a least squares linear fit. It is used to re-calibrate the χ_{red}^2 -values so that the stars of different magnitude can be compared. Middle: Distribution of the re-calibrated, reduced χ_{red}^2 values for the linear fits of the data of position vs. time. The black histogram is for the fits in right ascension, the blue histogram for the fits in declination. Bottom: Distribution of the velocity uncertainties, after scaling with the reduced χ^2 values. Black for right ascension and blue for declination.

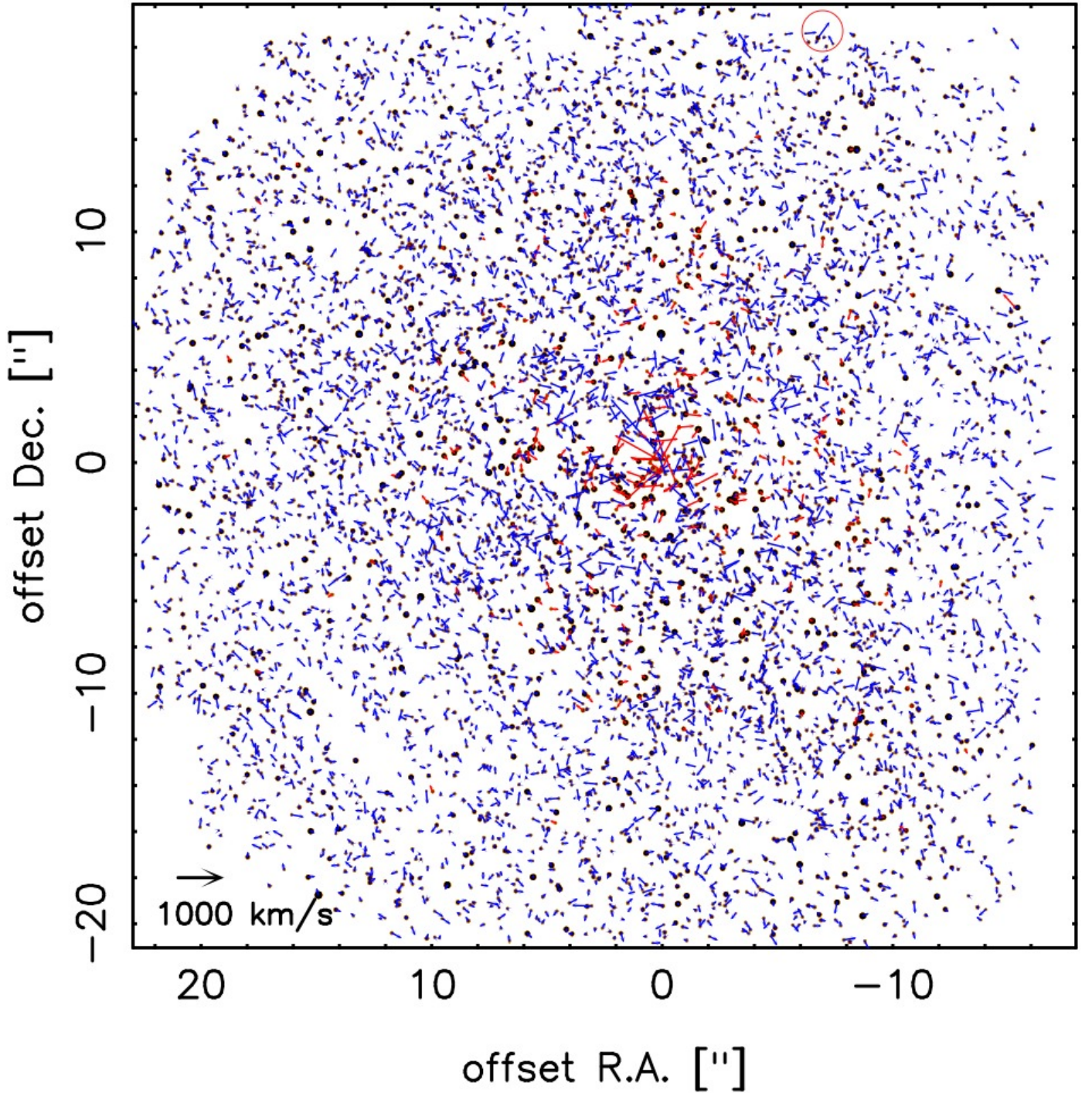


Fig. 4. Map of stars with measured proper motions in the GC central field. North is up and east is to the left. Arrows indicate magnitude and direction of the proper motion velocities. The black arrow in the lower left corner indicates the length of a 1000 km s^{-1} arrow. Positions and velocities of the stars are listed in in Tab. B.1. Early-type stars, identified by Paumard et al. (2006) and Buchholz, Schödel & Eckart (2009, submitted to A&A) are indicated by red arrows. The small red circle marks the best candidate for a star escaping the cluster.

4 different years. This assures an adequate sampling of its proper motion. The reasons why certain stars are not present in all the epochs are, among others, variable quality of the data (Strehl ratio, exposure time, noise introduced by read-out electronics, etc.), a variable FOV of the observations, or, in some exceptional cases, strong orbital acceleration of stars close to Sgr A* ($R < 0.5''$). More than 80% of all stars in the common overlap area that are not present at all epochs (corresponding to $\approx 10\%$

of all stars) are faint stars ($\text{mag}_K < 15.5$), whose detection and measurement is particularly affected by the data quality.

Outliers in the data were removed by first applying an unweighted fit (in order to avoid to be biased by spurious erroneous measurements) and rejecting any data point with a deviation $> 5\sigma$ from the fitted position. Then the linear fit was repeated by weighting the positions according to their 1σ uncertainties. Although we have not investigated the exact causes

of these outliers – there may be various causes – we believe that the main reason for the spurious data points is confusion with unresolved (maybe in a few cases also resolved) sources in the dense NSC. This source of systematic uncertainty has been investigated in detail by Ghez et al. (2008). This hypothesis is supported by the fact that outliers are largely associated with faint stars. More than 75% (97%) of the outliers are associated with stars fainter than $\text{mag}_K = 15.5$ (14.0). As concerns the numbers of removed data points, 22% of the stars had one data point removed, 10% two, and 8% three or more. The above mentioned criterion that position measurements had to be available for at least 4 different years was applied only *after* removing the outliers.

A distance of 8.0 kpc to the GC was assumed. A pixel scale of $0.027''/\text{pixel}$ was adopted for the camera detector (see ESO manual con NAOS/CONICA, available at the ESO web site). The adopted pixel scale is somewhat smaller than the value given in the manual ($0.02715''/\text{pixel}$). However, this difference will lead to a systematic error of less than 0.6% on the measured proper motions.

In the top panel of Fig. 3 we show a plot of reduced χ^2 vs. Ks-band magnitude for the proper motion fits. As can be seen, χ_{red}^2 is close to 1.0 for stars brighter than $\text{mag}_{Ks} \approx 14.0$, but increases toward fainter magnitudes. This indicates that there are measurement uncertainties that we have not taken into account and that become increasingly important for faint stars. Since the positional uncertainty for each star is derived from multiple images at each epoch, the positional uncertainty for a given epoch can be expected to be correctly determined. This implies that the missing source of uncertainty must be due to systematic deviations between the epochs. This means that while a stellar position may be measured with high *precision* in one epoch, its *accuracy* may in fact be subject to additional errors. We believe that the most probable source of error that has not been taken into account in our analysis consists of systematic deviations of the positions of faint stars due to their motion through an extremely dense stellar field and bright background due to unresolved stars. This source of error is described and analyzed in detail for the star S2/S0-2 in a recent paper by Ghez et al. (2008).

The systematic increase of χ_{red}^2 vs. brightness can be fitted well with a simple line in log-log space. This fit is used to re-normalize the χ_{red}^2 -values of the stars before determining the overall distribution of χ_{red}^2 -values. The latter is shown in the middle panel of Fig. 3 and can be seen to peak close to 1.0 as expected. Please note that we do not deal with an *ideal* χ_{red}^2 -distribution because the number of degrees of freedom varies, depending on the number of measurements available per star.

In order to avoid under- (in the majority of cases, see top panel of Fig. 3) or over-estimating the uncertainties of the inferred velocities, the uncertainties were re-scaled with the corresponding χ_{red}^2 of the fit. This procedure is viable because we can assume that a linear fit is in fact a reasonable model for our data. The distribution of the velocity uncertainties after re-scaling is shown in the bottom panel of Fig. 3. The percentage of sources with $d v_{x,y} > 50 \text{ km s}^{-1}$ is $\leq 2\%$. More than 80% of the stars have velocity uncertainties $d v_{x,y} < 25 \text{ km s}^{-1}$.

After application of the methodology described above, we obtained a list of 6124 stars with measured proper motions for the central field. The positions and velocities of the measured stars are illustrated in Fig. 4. Some important features can be seen at first glance: the velocities are highest near Sgr A* (at the origin of the coordinate system) and decrease with distance from the black hole; some apparently coherently moving groups

of stars can be seen at a few arcseconds distance from Sgr A*, related to known groups (IRS 13, IRS 16) and/or the disk(s) of young stars in the central half parsec (see Levin & Beloborodov 2003; Genzel et al. 2003; Lu et al. 2005; Schödel et al. 2005; Paumard et al. 2006); at larger distances the directions of the proper motions appear to be random.

The influence of the proper motions of the reference stars on the accuracy of the coordinate transformation was checked by iterating the described procedure to obtain proper motions. The initially measured proper motions of the reference stars were used to calculate their correct positions for each epoch. The resulting change in the measured stellar velocities for all sources is insignificant ($\ll 1 \sigma$). Hence, the approach of using a dense grid of evenly sampled reference stars delivers very stable solutions for the coordinate transformation. As a further test, we repeated the above procedure by applying just a second order transformation ($i, j_{max} = 2$ in eqs. A.1 and A.2) of the stellar positions into the reference frame. Again, the deviations were insignificant.

In a final step, the pixel positions of the stars were transformed into the radio reference frame as established by maser stars. The positions and proper motions of the SiO masers IRS 15NE, IRS 7, IRS 17, IRS 10EE, IRS 28, IRS 9, and IRS 12N are taken from the values measured by Reid et al. (2007), while their IR positions and proper motions are taken from the linear fits derived from our data set. A first order transformation was applied ($i, j_{max} = 1$ in Eqs. A.1 and A.2). In order to estimate the uncertainty of the transformation into the radio frames, the transformation parameters were estimated repeatedly with subsets of 6 out of the 7 maser stars. A smoothed (by applying a Gaussian filter of $2.0''$ FWHM) map of the systematic uncertainty of the astrometric position in the radio frame was created and is shown in Fig. 5. Near Sgr A* an absolute positional rms accuracy of ~ 15 milli-arcseconds is reached. Probably the most important effects that limit the accuracy of the alignment with the astrometric reference frame are the uncertainty of the proper motions of the maser stars in the IR frame and residual distortions in the IR reference frame because we did not determine a distortion solution for our 2006 reference frame (see section A). The maser stars are saturated in the data of most epochs, with the positional information therefore being based mainly on the PSF wings of these stars. The proper motions of the maser stars in the infrared and radio frames agree very well (see section 5.3 below).

The intrinsic $H - K$ colour of the stars in the GC field is almost (to within $\sim 0.1 \text{ mag}$) independent of their stellar type (see discussion in Schödel et al. 2007). Therefore $H - K$ -colours can be used to get a fairly accurate value of the extinction toward individual stars. We identified about 30 foreground stars in the proper motion sample by their low extinction ($A_K < 2.0$) and removed them from the sample. Here, we used the $H - K$ values and extinction measurements of Schödel et al. (in preparation).

The final list of stars with their fitted positions in 2004.44, their measured proper motions, and magnitudes is presented in Table B.1. Since the few million year-old population of early-type stars in the central parsec has particular kinematic properties (see Paumard et al. 2006; Lu et al. 2008), we identified early-type stars in the sample. We find 79 early-type stars from the spectroscopic analysis by Paumard et al. (2006) (their table 2) and 202 additional early-type candidates from the photometric analysis of Buchholz, Schödel & Eckart (2009, submitted to A&A). Spectroscopically identified early-type stars are marked with a “1” and photometrically identified ones with a “2” in the last column of Table B.1. We recommend future users of this list to cross-check the identifications with the latest avail-

able publications. Note also that identification of spectral type was only available for a fraction of the stars, leaving a large number of stars unidentified (near the edge of the FOV and all stars fainter than $mag_{K_s} \approx 15.5$). Note also that the number of early-type stars is much smaller than the overall number of stars. Also, their surface density decreases rapidly beyond a few arcseconds distance from Sgr A* (Paumard et al. 2006; Lu et al. 2008). Therefore, their weight on the measured statistical properties of the entire cluster is almost negligible, except in the innermost arcseconds. Nevertheless, we will largely exclude the identified early-type stars from our analysis due to their special dynamical properties.

The reader should keep in mind that orbital accelerations have not been taken into account in the present analysis. This is the reason why the position of the star S2 in Table B.1 (second line) has an offset from its actual position in 2004.44 that is ~ 20 mas larger than the astrometric uncertainty at its position. This kind of additional uncertainty only affects very few (< 5) stars. We did not exclude them from our sample because they provide important information on the velocity dispersion near Sgr A*.

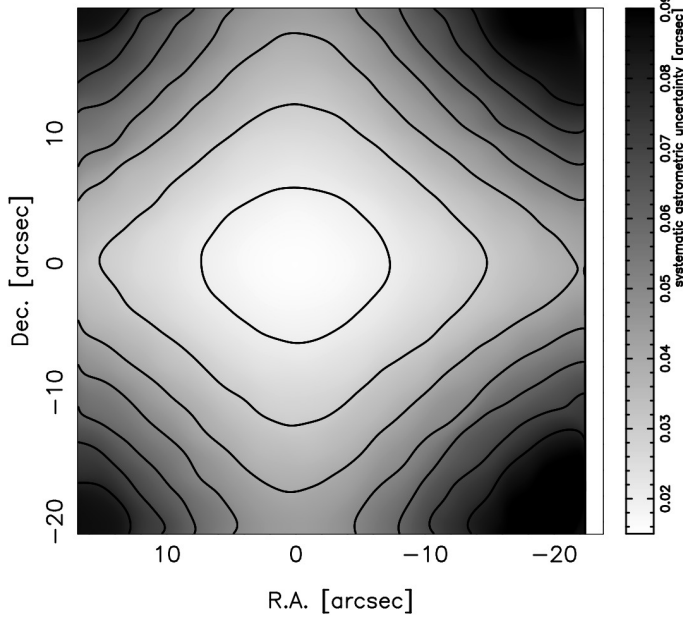


Fig. 5. Map of the systematic positional uncertainty of the astrometric positions of the stars listed in Tab. B.1. Contours are plotted in steps of 10 mas from 20 to 80 mas.

5.2. Offset field

The results of the proper motion analysis for the offset field serve as cross-validation of our results, but were not used for the subsequent modeling because the quality of the proper motions is lower (only three epochs compared to 11 for the center field) and the radial range of the proper motions is not extended significantly. The data and results are described in appendix B.

5.3. Relative motion between radio and infrared frame of reference

A question of great interest is whether there exists any relative motion between the radio and near-infrared reference frames.

The black hole, Sgr A* is at rest in the so-called *radio reference frame*. The positions and velocities of the maser stars have been measured in the radio frame via VLBI observations (see, e.g., Reid et al. 2007). When deriving the positions and proper motions of stars in the *infrared frame*, we assume that the cluster of stars has an average velocity of zero (see also appendix A). Hence, comparing the velocities of the maser stars measured in the radio and in the infrared frames is an important cross-check. Their velocities are expected to be identical in the two reference frames. Any significant non-zero average value of the difference between the masers' radio and infrared proper motions would imply a relative movement between Sgr A* and the star cluster.

We list the measured proper motions in the infrared frame of the 7 maser stars used for the astrometric alignment in Table 2. All infrared proper motions of the maser stars agree within $< 3\sigma$ with their proper motions as measured by VLBI (Reid et al. 2007).

The weighted mean difference between the velocities of the seven maser stars in the radio and the IR frames is in right ascension 0.01 ± 0.10 mas yr $^{-1}$ (unweighted: 0.04 ± 0.45 mas yr $^{-1}$) toward the east and in declination 0.22 ± 0.11 mas yr $^{-1}$ (unweighted: 0.07 ± 0.67 mas yr $^{-1}$) toward the south. At a distance of 8.0 kpc a proper motion of 1 mas yr $^{-1}$ corresponds to ~ 38 km s $^{-1}$. Converting the weighted mean motions to km s $^{-1}$ this means that the radio reference frame moves relative to the IR frame with 0.4 ± 3.8 km s $^{-1}$ toward east and 8.4 ± 3.8 km s $^{-1}$ toward south. Following Reid et al. (2007) an additional systematic error of 5 km s $^{-1}$ should be added to these values in quadrature in order to take into account the removal of the average motion of the IR frame (IR-motions are derived by assuming that the net motion of the reference stars is 0). This results in a 1σ uncertainty of 6.4 km s $^{-1}$ on the relative motion between the radio and IR reference frames. This reduces the significance of the southward motion to less than 2σ . Considering additionally that the weighted relative mean velocity between the radio and IR frames in Reid et al. (2007) is a net *northward* motion, while we measure a *southward* motion here, we can safely conclude that the result is consistent with no detectable motion. We conclude that within the accuracy of the presented measurements there is no detectable relative motion between the infrared and the radio reference frames and consequently between the stellar cluster and the central supermassive black hole Sgr A*. This is consistent with our expectations. The expected rms velocity of the BH due to gravitational perturbations from stars is ~ 0.2 km s $^{-1}$ (Merritt et al. 2007).

6. Velocity structure of the NSC

6.1. First look

The velocity data were converted from directions along right ascension and declination into physically more meaningful projected radial and tangential velocities with respect to Sgr A*. The mean projected radial and tangential velocities and velocity dispersions for the center data set, excluding identified early-type stars, are shown in Fig. 6. The top left panel shows the mean velocities vs. distance from Sgr A* in radial bins. The mean velocities are generally close to zero. There are some deviations from zero, but also larger error bars, at $R \lesssim 6''$. In these innermost bins stellar numbers are lower because of the correspondingly smaller surface areas. Also, the relative number of early-type stars increases toward Sgr A*. This tends to decrease additionally the number of stars in the bins (early-type stars were excluded from this analysis). There are no significant indications of net

Table 2. Measured proper motions, in the infrared frame, of the maser stars used for astrometric alignment. Positions are given for 2004.44 as offsets from Sgr A*, positive toward the north and east. Proper motions are given in milli-arcseconds per year, positive toward north and east. The last two columns list the differences between the radio (Reid et al. 2007) and IR proper motions.

Name	R.A. [arcsec]	Dec. [arcsec]	$v_{R.A.}$ [mas yr ⁻¹]	v_{Dec} [mas yr ⁻¹]	$\Delta_{\text{radio,IR}} v_{R.A.}$ [mas yr ⁻¹]	$\Delta_{\text{radio,IR}} v_{Dec}$ [mas yr ⁻¹]
IRS 15NE	1.226 ± 0.015	11.327 ± 0.024	-1.51 ± 0.15	-5.81 ± 0.15	-0.46 ± 0.17	0.13 ± 0.19
IRS 7	0.046 ± 0.010	5.569 ± 0.016	-0.05 ± 0.23	-4.59 ± 0.23	-0.53 ± 0.55	1.07 ± 0.59
IRS 17	13.143 ± 0.019	5.566 ± 0.030	-1.70 ± 0.12	-1.04 ± 0.12	0.09 ± 1.09	0.29 ± 1.23
IRS 10EE	7.688 ± 0.012	4.220 ± 0.020	-0.40 ± 0.18	-1.55 ± 0.18	0.44 ± 0.19	-0.55 ± 0.19
IRS 28	10.477 ± 0.016	-5.825 ± 0.026	1.62 ± 0.23	-4.71 ± 0.23	0.38 ± 0.44	-0.57 ± 0.48
IRS 9	5.672 ± 0.013	-6.335 ± 0.021	3.30 ± 0.25	3.03 ± 0.25	-0.24 ± 0.26	-0.92 ± 0.31
IRS 12N	-3.250 ± 0.012	-6.876 ± 0.019	-1.62 ± 0.22	-2.78 ± 0.22	0.56 ± 0.24	0.07 ± 0.28

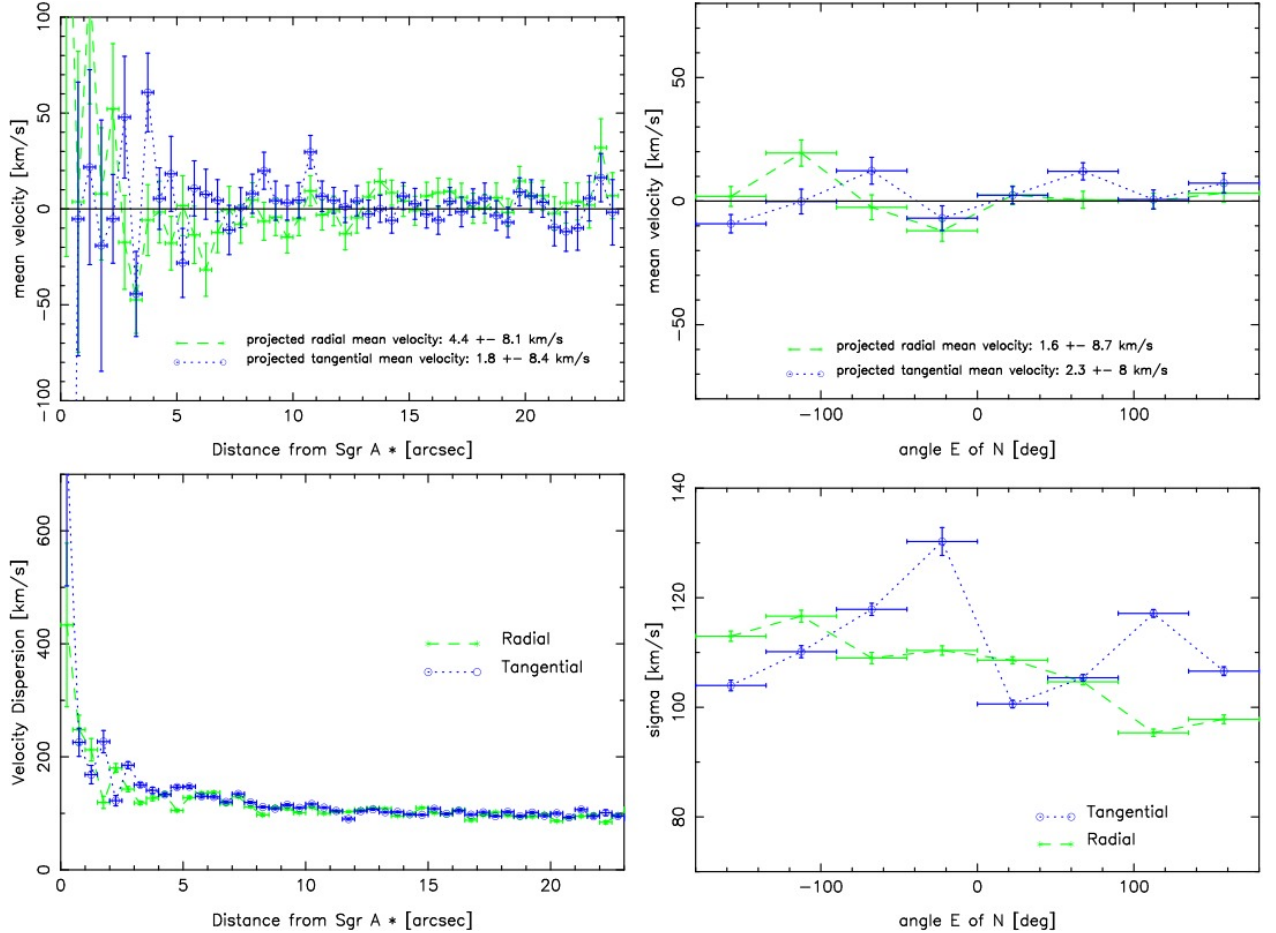


Fig. 6. Top: Mean projected radial and tangential velocities vs. projected distance from Sgr A* (left) and vs. angle east of north (right). Mean values and the standard deviations annotated in the plots were calculated from the unweighted data points. Bottom: Projected radial (green) and tangential (blue) velocity dispersions in the GC nuclear star cluster vs. projected distance from Sgr A* (left) and vs. angle east of north (right). These plots are based on the center data set (see Fig. 1) under the exclusion of identified early-type stars.

expansion, contraction, or rotation of parts of the cluster in the plane of the sky. An overall net rotation of the entire cluster *in the plane of the sky with a constant angular velocity* cannot be detected by our method. The reason is that the coordinate transformation between the epochs is based on the assumption that the overall motion of the stars is zero. Rotation of *parts* of the cluster, such as the disk of early-type stars, can be detected, however (see Fig. 4).

A comparison between proper motions of maser stars in the radio and infrared reference frames allows some check on the rotation of the cluster in the plane of the sky. It does not provide any evidence for rotation in the plane of the sky (see subsec-

tion 6.2). The top right panel of Fig. 6 shows the mean velocities of the stars vs. angle on the sky, measured east of north. They are close to zero, but a possibly significant sinusoidal pattern can be discerned, especially in the tangential mean velocities. This is probably the imprint of an overall rotation of the cluster (see below) *in the Galactic plane*.

The bottom left panel of Fig. 6 shows a plot of the projected radial and tangential velocity dispersion vs. distance from Sgr A*. With the exception of the region at $R < 6''$ the data suggest isotropy with considerable accuracy. Any deviations from isotropy at $R < 6''$ may be due to either worse statistics (smaller surface area and exclusion of early-type stars) and /

or the presence of not identified early-type stars in the sample, which may follow a coherent rotation pattern (see Genzel et al. 2003; Paumard et al. 2006; Lu et al. 2006, and Fig. 4). The plot of the velocity dispersion vs. angle on the sky (bottom right) shows a sinusoidal pattern for the projected tangential velocity dispersion, which is probably due to rotation of the cluster in the Galactic plane (see sub-section 6.3 below).

6.2. Rotation in the plane of the sky

The proper motions were derived by a third order polynomial alignment of the stellar positions with the reference epoch. This procedure excludes detecting rotation of the *entire* cluster with a *constant* angular velocity in the plane of the sky. It does, however, not exclude detecting rotation of sub-groups of star, such as the early type stars within a few arcseconds from Sgr A* (see Fig. 4) that is described in detail, e.g., in Paumard et al. (2006); Lu et al. (2008).

The maser stars offer, in principle, the possibility of a cross check because their velocity have been measured independently in the radio reference frame. In Fig. 7 we show a plot of the projected tangential proper motions of the maser stars as measured in the radio and infrared frames, as well as the respective differences. While 7 stars are far too less for any statistically meaningful test of the absolute rotation of the cluster in the plane of the sky, it is at least possible to check for any *relative* rotation between the radio and infrared frames.

The mean difference (radio minus infrared) tangential proper motion is -0.5 km s^{-1} with a standard deviation of 21.8 km s^{-1} . A linear fit to the difference values results in a slope of $3.8 \pm 11.1 \text{ km s}^{-1} \text{ arcsec}^{-1}$ (uncertainty re-scaled to a reduced χ^2 of 1). We conclude that there is no detectable relative rotation between the radio and infrared reference frames. Future measurements with longer time baselines and more maser stars can help to reduce the still large uncertainty of this comparison.

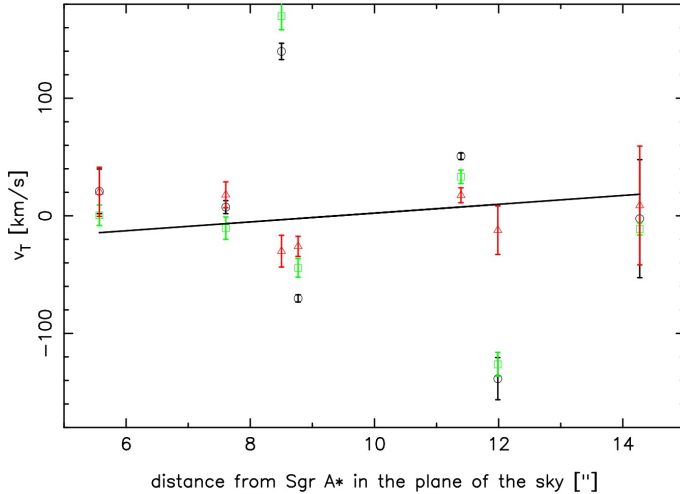


Fig. 7. Projected tangential proper motion of the maser stars vs. projected distance from Sgr A*. Black circles: radio proper motions; green boxes: infrared proper motions; red triangles: difference between radio and infrared proper motions. The straight line has been fitted to the difference data. No relative rotation between radio and infrared frames can be detected within the uncertainties of this analysis.

6.3. Rotation in the Galactic plane

The analyses of the radial and tangential projected mean velocities and velocity dispersions show that there may be an overall rotation in the cluster. Overall rotation of the Galactic center star cluster has been reported recently by Trippe et al. (2008), based on similar proper motion measurements as in this work and as well on spectroscopic measurements of the line-of-sight velocity of late type-stars.

The top panel of Figure 8 shows histograms of the directions of the proper motions of stars (methodology adapted from Trippe et al. 2008), measured east of north, in four different projected radial distance bins. At $R \gtrsim 5''$ a sinusoidal pattern emerges. Cosine functions were fitted to the data. The angles and their formal fit uncertainties of the corresponding rotation axes are $34 \pm 11 \text{ deg}$ ($5'' \leq R \leq 10''$), $29 \pm 7 \text{ deg}$ ($10'' \leq R \leq 15''$), and $30 \pm 6 \text{ deg}$ ($15'' \leq R \leq 20''$).

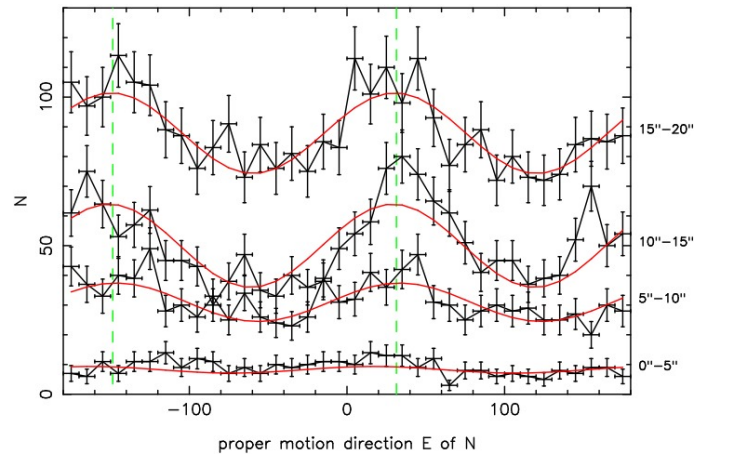


Fig. 8. Histograms of the direction angle, measured east of north, of measured stellar proper motions, for the distance bins $0'' - 5''$, $5'' - 10''$, $10'' - 15''$, and $15'' - 20''$.

Insight into preferred directions of motion can also be obtained from the velocity dispersion. In the general, three-dimensional case, the local velocity dispersion is described by an ellipsoid with three principal axes. Here we have evaluated the projected velocity dispersion on grid points over the FOV. Locally, the projected velocity dispersion is then described by ellipses. A map of the principal axes of the 2D velocity ellipses of the late-type stars on the plane of the sky is shown in the left panel of Fig. 9. The histograms in the right panel of Fig. 9 shows the distribution of angles (measured north of east) defined by the longest axis of the velocity ellipses. The red histogram was calculated using only stars within $\pm 6''$ from Sgr A*, the black one includes all stars. The histogram for all stars shows a clear peak at $34 \pm 5 \text{ deg}$. In the central arcseconds (red histogram) there is no well-defined preferred direction.

The finding of a preferred axis in the plane of the sky can be explained by assuming that the NSC shows a general rotation pattern parallel to Galactic rotation. The angle on the sky of the Galactic plane is 31.4 deg east of north in J2000 coordinates (see Reid & Brunthaler 2004). This agrees very well with the preferred axis directions found in our analysis. Trippe et al. (2008), who include additionally spectroscopic data for their analysis, show that the sense of the rotation of the cluster agrees with overall Galactic rotation.

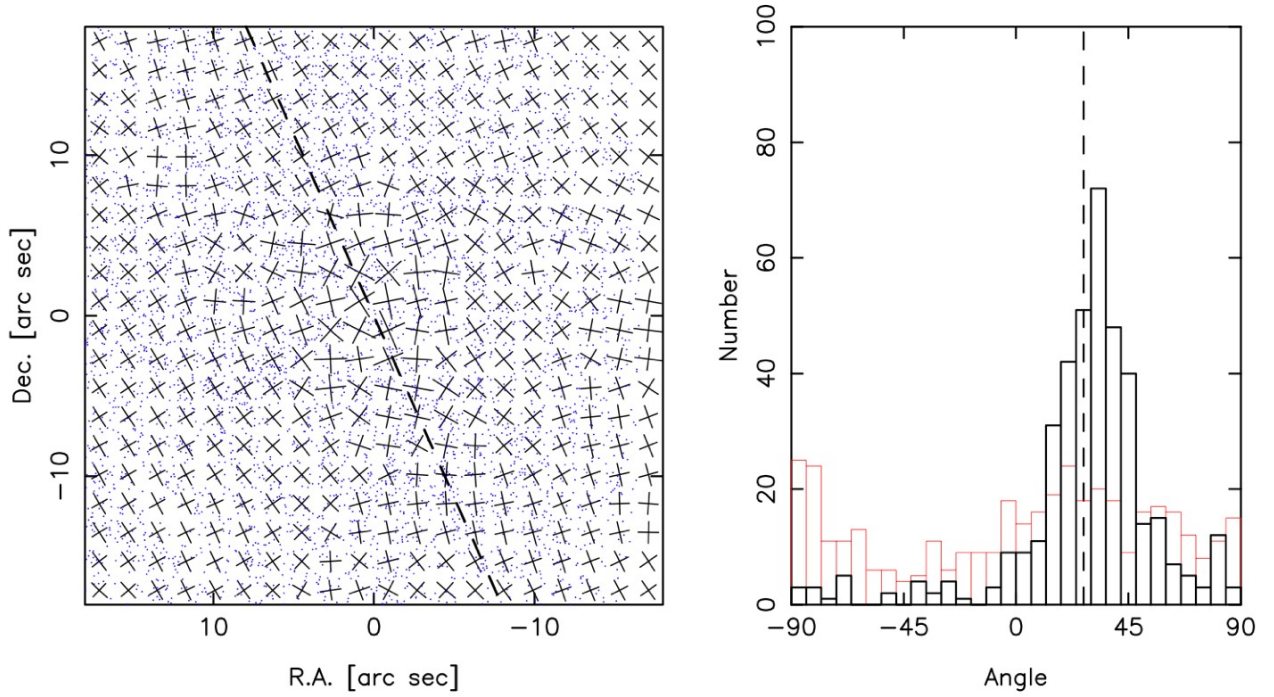


Fig. 9. Left: Map of the principal axes of the 2D velocity ellipses of the late-type stars on the plane of the sky. Right: Histograms of the distribution of angles (measured north of east) defined by the longest axis of the velocity ellipses. The red histogram was calculated using only stars within $\pm 6''$ from Sgr A*, the black one includes all stars. The dashed line indicates the angle of the Galactic plane.

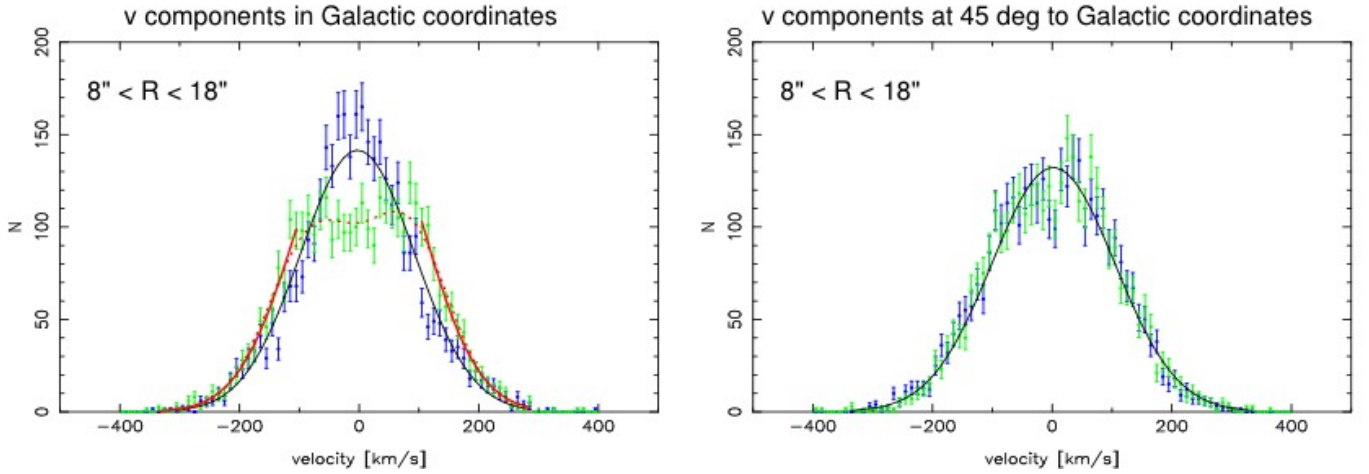


Fig. 10. Left: Histograms of the velocity parallel (green), v_l , and perpendicular (blue), v_b , to the angle of the Galactic plane on the sky. The black solid lines is a fit to the histogram of v_b with a Gaussian function. The red dotted line is a fit to the histogram of v_l with the sum of two Gaussian function. The straight red lines are Gaussian fits to the data with $v_l > 100 \text{ km s}^{-1}$ and $v_l < 100 \text{ km s}^{-1}$, respectively, using the same velocity dispersion as for the Gaussian that fits the histogram of v_b . Right: Histograms of the velocity dispersion parallel (green) and perpendicular (blue) to a plane at 45 deg to the angle of the Galactic plane on the sky. The Gaussian functions fit to the two histograms are indistinguishable within the fit uncertainties. The plots include only data within $8'' > R > 18''$ projected distance from Sgr A*.

6.4. Velocity dispersion

The measured proper motion velocities were transformed to velocities parallel and perpendicular to the Galactic plane in order to examine the influence of cluster rotation on the two-dimensional velocity dispersion. Plots of the corresponding velocity (v_l along Galactic longitude and v_b along Galactic latitude) histograms are shown in the left panel of Fig. 10. The plots include only data within $8'' > R > 18''$ projected distance from

Sgr A* because inside of $R = 8''$ the projected velocity dispersion shows a clear Keplerian increase and at $R > 18''$ the FOV becomes increasingly asymmetric (see Fig. 4). The histogram of the velocity along Galactic latitude can be fit well with a Gaussian function with a mean of $-2.6 \pm 1.7 \text{ km s}^{-1}$ and a standard deviation of $95.2 \pm 1.3 \text{ km s}^{-1}$ (1σ uncertainties). The histogram of the velocity along Galactic longitude appears broadened, with an indication of two symmetric peaks, due to the

overall rotation of the cluster. The peak at negative v_l appears somewhat smaller. This is to be expected since stars with $v_l < 0$ will have a larger probability to be located near the backside of the cluster and thus a somewhat smaller chance to be detected (e.g., because of extinction). The histogram of v_l can be formally fit with two Gaussians (dotted red line in left panel of Fig. 10), having means of $-77.2 \pm 9.9 \text{ km s}^{-1}$ and $82.1 \pm 9.0 \text{ km s}^{-1}$ and standard deviations of $73.7 \pm 4.8 \text{ km s}^{-1}$ and $69.3.7 \pm 4.3 \text{ km s}^{-1}$, respectively. However, while formally correct, this fit does not reflect well the physical reality because it assumes a ring of stars rotating with a constant velocity. The stars are distributed over a range of distances in an approximately spherical cluster and the rotation velocity can be expected to be a function of distance from the center (see also Trippe et al. 2008).

The right panel of Fig. 10 shows velocity histograms after projecting the velocities parallel and perpendicular to an axis that runs at 45 deg to the angle of the Galactic plane. The effect of Galactic rotation is in this case distributed evenly among the two histograms. The Gaussian functions fitted to the two histograms are indistinguishable within their uncertainties. They have peak values of 131.0 and 132.1, mean values of $-1.8 \pm 1.8 \text{ km s}^{-1}$ and $2.1 \pm 1.8 \text{ km s}^{-1}$, and standard deviations of $103.6 \pm 1.3 \text{ km s}^{-1}$ and $102.9 \pm 1.4 \text{ km s}^{-1}$. We interpret this as evidence that no anisotropy in the kinematics of the late-type stellar population is detected that is larger or comparable to the rotation signature.

Assuming isotropy, we can obtain a zeroth order estimate of the maximum rotation velocity of the NSC at the edge of our FOV from the histogram of v_l . The histogram of v_l can be assumed to result from the convolution of a Gaussian with some function that describes the rotation velocity. The Gaussian is hereby assumed to have the same standard deviation as the one that fits the histogram of v_b . Fitting the flanks of the histogram of v_l with such a Gaussian will hence give us an estimate of the maximum rotation velocity within our FOV via the shift of the mean. Such fits (straight red lines in left panel of Fig. 10) result in velocities of $20.3 \pm 2.8 \text{ km s}^{-1}$ and $-19.0 \pm 3.0 \text{ km s}^{-1}$. This is in good agreement with the model of (Trippe et al. 2008), which would result in a rotation velocity of $25.6 \pm 6.5 \text{ km s}^{-1}$ at a distance of $18''$.

It is important to consider the systematic uncertainty in the proper motion velocity dispersion. The uncertainties of the individual stellar velocities will cause the velocity dispersion to be biased toward larger values (see also Genzel et al. 2000). We tested this effect by a MC simulation in which 5000 stars were drawn from a distribution with an intrinsic $\sigma_i = 100 \text{ km s}^{-1}$. If the uncertainty of all individual velocity measurements is $\delta v = 12 \text{ km s}^{-1}$, the average resulting σ , σ_{res} , from the randomly selected velocities in 100 runs is $\sigma_{res} = 100.7 \pm 1.0 \text{ km s}^{-1}$. For $\delta v = 25 \text{ km s}^{-1}$ we obtain $\sigma_{res} = 103.1 \pm 1.1 \text{ km s}^{-1}$, and for $\delta v = 50 \text{ km s}^{-1}$ the measured velocity dispersion is $\sigma_{res} = 111.8 \pm 1.1 \text{ km s}^{-1}$. As mentioned above, more than 80% of the stars in the center field have velocity uncertainties $d v_{xy} < 25 \text{ km s}^{-1}$. Therefore we estimate that the bias on the velocity dispersion due to the uncertainties of the individual measurements in our data is $< 5\%$. Nevertheless, the uncertainties of the individual stellar velocities will be taken into account in the modelling outlined in section 7.

6.5. Runaway stars

There are a few stars with proper motion velocities in either axis exceeding 400 km s^{-1} . We have checked the corresponding data and proper motion fits individually. Almost all of these stars are

among the faintest in the sample and show large 1σ uncertainties of their velocities. They can therefore be only regarded as candidates for extremely fast stars. There is one notable exception, however, a star at $(-6.75'', 18.41'')$ offset from Sgr A* (marked by a red circle in Fig. 4). Its projected radial and tangential proper motion velocities are 407.4 ± 16.5 and $119.0 \pm 22.3 \text{ km s}^{-1}$, respectively. Assuming that the star is located on the plane of the sky and has zero velocity along the line-of-sight, we compute a minimum mass of $1.6 \times 10^7 \pm 1.3 \times 10^6 M_\odot$ required to bind this star to the cluster. Since this mass is unrealistically high, we conclude that the star is a solid candidate for an object that escapes the Milky Way nuclear star cluster.

6.6. Offset data set

The mean velocities and velocity dispersions for the offset data are described in appendix B. The main result is that the offset data show that the projected velocity dispersion stays approximately constant and isotropic within the measurement uncertainties out to a projected radius of $R = 30''$.

7. Dynamics and masses

7.1. Assumptions

An advantage of proper motions over spectroscopically determined, line-of-sight velocities is that one obtains a more complete picture of the internal kinematics (Leonard & Merritt 1989). In a spherical nonrotating system, knowledge of the proper motion velocities at all projected radii is equivalent to knowledge of the shape of the velocity ellipsoid at all internal radii. The enclosed mass then follows uniquely from the Jeans equation. If only line-of-sight velocities are available, inferences about the mass will suffer from a (potentially extreme) degeneracy due to the unknown shape of the velocity ellipsoid and its variation with radius (e.g. Dejonghe & Merritt 1992).

Based on the results in the previous section, we here model the late-type stars in the nuclear cluster as a spherical, nonrotating population. The observed stars are assumed to move in the combined gravitational field of the black hole, plus an additional distributed mass component, also assumed to be spherically symmetric but otherwise undetermined. We denote the observed (1d) velocity dispersions parallel and tangential to the radius vector \mathbf{R} in the plane of the sky as $\sigma_R(R), \sigma_T(R)$. The velocity dispersions parallel and tangential to the spatial (not projected) radius vector \mathbf{r} are $\sigma_r(r), \sigma_t(r)$.

As discussed in Leonard & Merritt (1989), there is a formally unique relation between the (observed) functions (σ_R, σ_T) and the (intrinsic) functions (σ_r, σ_t) if the number density profile $n(r)$ is also known. Given the intrinsic velocity dispersions, the enclosed mass is

$$GM(r) = -\frac{r^2}{n} \frac{d(n\sigma_r^2)}{dr} - 2r(\sigma_r^2 - \sigma_t^2). \quad (1)$$

The uniqueness of the kinematical deprojection is a strong motivation for modelling the nuclear cluster in this way. One cost is that we are not able to reproduce the gradual alignment of the velocity vectors parallel to the Galactic plane that is observed outside of $\sim 6'' \approx 0.3 \text{ pc}$ (Fig. 9). Reproducing this feature would require adding more complexity to our model, which in turn would require more kinematical data in order to constrain the extra degrees of freedom. For instance, the cluster could be represented as an oblate spheroid in which the orbits respect

three independent integrals of the motion; the additional information needed to constrain the model could come from line-of-sight velocities measured over the 2d field. We believe that our approach is the most appropriate given the information currently available.

Neglecting the rotation of the cluster parallel to Galactic rotation in our analysis appears justified for two reasons. First, the actual velocity of rotation and its radial dependence is not well constrained (see discussion in sub-section 8.1). Second, the influence of rotation on the mass estimates for the central parsec will be small. Even if the rotation velocity were as high as 30 km s^{-1} at 1 pc, this would still be only about 30% of the velocity dispersion. Since both quantities enter the Jeans equation quadratically, the error on the enclosed mass would only be of order 10%.

7.2. Moment estimators

As a first step, we examine the moment mass estimator defined by Leonard & Merritt (1989):

$$\langle M(r) \rangle = \frac{16}{3\pi G} \langle R(2V_R^2 + V_T^2) \rangle \quad (2)$$

where angle brackets denote number-weighted averages over the entire system. In a cluster with constant mass-to-light ratio (i.e., $\rho(r) \propto n(r)$), $\langle M(r) \rangle = M_T/2$ with M_T the total mass; while if all the mass is located in a central point of mass M_{BH} , $\langle M(r) \rangle = M_{BH}$. Unlike the projected mass estimators of Bahcall & Tremaine (1981) and Heisler et al. (1985), the LM estimator contains no undetermined parameter to compensate for the unknown anisotropy. However, like all moment estimators, equation (2) contains only limited information about the *distribution* of the mass. In addition, as emphasized by Genzel et al. (2000), Figer et al. (2003) and Zhu et al. (2008), moment estimators must be applied cautiously in cases where data do not extend over the entire system, or where the observed sample is dominated by stars that are intrinsically far from (but projected near to) the center.

Figure 11 shows the result of computing (2) as a function of the outer radius of the sample. Results from both late-type and early-type stars, considered separately, are shown; also shown is the result using the combined sample. The late-type stars alone imply a mass of $\sim 2 \times 10^6 M_\odot$ at small radii, $R \lesssim 0.1$ pc, increasing gradually toward larger radii. The smaller sample of early-type stars yields a mass estimate that is more nearly constant with radius, $M_{BH} \approx 3 - 4 \times 10^6 M_\odot$. As noted by Paumard et al. (2006) and Lu et al. (2008), the surface number density of early-type stars decreases steeply with distance from Sgr A*, like a power-law with index ~ -2 . Therefore, more than 90% of the early type stars are contained within a projected radius $R < 0.5$ pc from Sgr A*. The sample of the early-type stars can therefore be regarded as complete. The LM mass estimator for these stars at the largest projected radii can for this reason be regarded as an accurate estimate of the BH mass.

Estimates of M_{BH} based on the assumption of Keplerian motion for the closest stars to the central dark mass are generally considered to be the most reliable. For an assumed GC distance of 8.0 kpc, the most recently published values are $M_{Sgr A^*} = 4.1 \pm 0.6 \times 10^6 M_\odot$ (Ghez et al. 2003), $4.1 \pm 0.4 \times 10^6 M_\odot$ (Eisenhauer et al. 2005), $3.7 \pm 0.2 \times 10^6 M_\odot$ (Ghez et al. 2005), $4.1 \pm 0.1 \times 10^6 M_\odot$ (Ghez et al. 2008), and $4.0 \pm 0.1 \times 10^6 M_\odot$ (Gillessen et al. 2008). The value $4.0 \times 10^6 M_\odot$ is shown as the dashed line on Figure 11; it is consistent with the LM mass es-

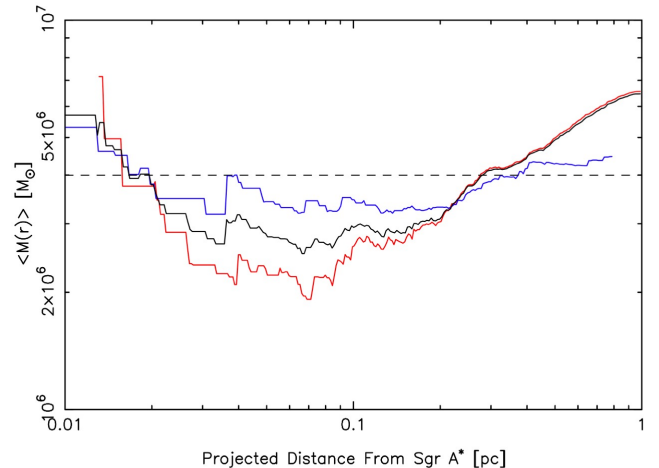


Fig. 11. LM mass estimator as a function of maximum projected distance from Sgr A*, based on the proper motions in the central field. *Red:* late-type stars; *blue:* early-type stars; *black:* combined sample.

timate derived from the young stars, but lies above the estimate derived from the old stars for $R \lesssim 0.3$ pc.

The comparison is complicated by the fact that the NSC extends probably far beyond the central parsec. Samples that extend to projected distances of ~ 1 pc from Sgr A* contain many stars that are moving far from the BH and that feel the gravitational force from the distributed mass. The gradual rise in $\langle M(r) \rangle$ at $R \gtrsim 0.3$ pc – in contrast to the near constant LM mass estimator for the early-type stars – may reflect this. On the other hand, restricting the sample to small projected radii is inconsistent with the assumptions made in deriving the LM estimator and will also bias the estimate.

We note that many previous studies based on radial velocities or proper motions of stars in the inner parsec have found values of M_{BH} that were $\sim 30 - 50\%$ lower than the currently accepted value (e.g. Eckart & Genzel 1997; Ghez et al. 1998; Genzel et al. 2000; Chakrabarty & Saha 2001). Figer et al. (2003) and Zhu et al. (2008) have argued that this bias can be attributed to the low space density of late-type stars near Sgr A*. Indeed there appears to be a “hole” in the distribution of old stars: their number counts are flat inside of ~ 0.25 pc, implying a space density that may even decline toward Sgr A* (Zhu et al. 2008, and discussion therein). In the extreme case of *no* stars intrinsically close to the BH, mass estimates based on the moment equations would clearly be biased toward low values. The drop of the LM mass estimate for the late-type stars down to only about 50% of the actual BH mass is most probably related to this deficit which leads to an underestimation of the true 3D distances of the stars from Sgr A*. The fact that the proper motion velocity dispersions of the dominant (late-type) population are observed to rise toward the projected center (e.g. Fig. 6) suggests that at least some of the old stars are physically close to the BH. Nevertheless, Figure 11 reinforces the idea that estimates of the BH mass from proper motions might be significantly influenced by the spatial distribution of the kinematical sample.

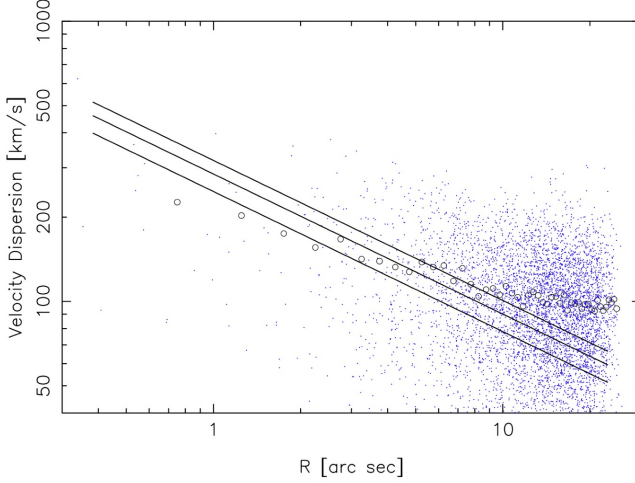


Fig. 12. Modelling the nuclear cluster assuming that all the mass is contained in the black hole and that the velocities are isotropic. The number density profile of the kinematical sample was assumed to be a single power law of the radius. Open circles are velocity dispersions computed using fixed radial bins; blue points are absolute values of the measured velocities. Straight lines show model predictions for $M_{\text{BH}} = (3, 4, 5) \times 10^6 M_{\odot}$.

7.3. Isotropic modelling

Proper motion velocities of the late-type stars appear to be nearly isotropic at most radii (Fig. 6). As our next step, we therefore model the NSC assuming $\sigma_r(r) = \sigma_t(r) \equiv \sigma(r)$ at all radii. Writing $\sigma_p^2(R) \equiv (1/2) [\sigma_R^2(R) + \sigma_T^2(R)]$, it is easy to show (e.g. Genzel et al. 1996) that

$$\Sigma(R) \sigma_p^2(R) = 2 \int_R^{\infty} \frac{dr r}{\sqrt{r^2 - R^2}} n(r) \sigma^2(r). \quad (3)$$

Here $\Sigma(R)$ is the surface number density of stars at a given projected distance. We can express $n\sigma^2$ in terms of the enclosed mass (BH plus stars) via the Jeans equation (1) with $\sigma_r = \sigma_t$:

$$n(r) \sigma^2(r) = \int_r^{\infty} dr' \frac{GM(r') n(r')}{r'^2} \quad (4)$$

and combining (3) and (4),

$$\begin{aligned} \Sigma(R) \sigma_p^2(R) &= 2G \int_R^{\infty} \frac{dr r}{\sqrt{r^2 - R^2}} \int_r^{\infty} \frac{dr' n(r') M(r')}{r'^2} \\ &= 2G \int_R^{\infty} dr \frac{\sqrt{r^2 - R^2} n(r) M(r)}{r^2}. \end{aligned} \quad (5)$$

Finally, writing $\Sigma(R)$ as the projection of $n(r)$,

$$\Sigma(R) = 2 \int_R^{\infty} \frac{dr r n(r)}{\sqrt{r^2 - R^2}} \quad (7)$$

yields

$$G^{-1} \sigma_p^2(R) = \frac{\int_R^{\infty} dr r^{-2} (r^2 - R^2)^{1/2} n(r) M(r)}{\int_R^{\infty} dr r (r^2 - R^2)^{-1/2} n(r)}. \quad (8)$$

The simplest case to consider is a model in which all of the mass is in the central black hole, $M(r) = M_{\text{BH}}$. If we also assume for simplicity that $n(r) = n_0(r/r_0)^{-\gamma}$, then equation (8) predicts

$$\sigma_p^2(R) = F(\gamma) \frac{GM_{\text{BH}}}{R}, \quad F(\gamma) = \frac{1}{2} \frac{[\Gamma(\gamma/2)]^2}{\Gamma(\frac{\gamma+3}{2}) \Gamma(\frac{\gamma-1}{2})}. \quad (9)$$

The function F is weakly dependent on γ ; for $1.5 \leq \gamma \leq 3.5$, $0.18 \leq F(\gamma) \leq 0.21$. Figure 12 shows the velocity dispersion profile predicted by this model, assuming $F = 0.18$ and $M_{\text{BH}} = (3, 4, 5) \times 10^6 M_{\odot}$. It is clear that no value for M_{BH} can fit the data both at large and small radii. For a BH mass in this range, the observed velocities begin to rise appreciably above the model predictions at $R \gtrsim 5'' \approx 0.25$ pc, suggesting that an additional component of the mass becomes important at this radius. This is consistent with the behavior noted above for the moment mass estimator. In addition, the observed velocities fall below the predicted values inside of $\sim 4'' \approx 0.2$ pc, again consistent with the LM estimator, which implied a lower value for M_{BH} when only the inner data were used.

Continuing under the assumption of isotropy, we can constrain a model of the stellar mass density by comparing the predictions of equation (8) with the observed velocities via

$$\chi^2 = \sum_{i=1}^N \frac{[V_i^2 - \sigma_p^2(R_i)]^2}{\Delta^2(R_i)} \quad (10)$$

under various assumptions about $M(r)$. Here, N is the number of measured velocities, $V_i^2 = v_i^2 - \text{error}^2(v_i)$ is the square of the i th measured velocity corrected for measurement error, $\sigma_p(R)$ is the model prediction, and Δ is an estimate of the dispersion of V^2 about its mean value at radius R ; the latter was computed using an adaptive kernel estimate of the velocity dispersion profile. The minimum reduced χ^2 of our isotropic models was 0.96.

We minimized χ^2 over a set of parameters defining the mass distribution:

$$M(r) = M_{\text{BH}} + 4\pi \int_0^r dr' r'^2 \rho(r'). \quad (11)$$

If we assume simple power laws for both $n(r)$ and $\rho(r)$,

$$n(r) \sim r^{-\gamma}, \quad \rho(r) \sim r^{-\Gamma}, \quad (12)$$

the integral in the numerator of equation (8) is divergent unless $\gamma + \Gamma > 3$. This creates difficulties since, in the region of interest, γ is small requiring large Γ . To avoid these unphysical divergences, we represented both $n(r)$ and $\rho(r)$ as broken power laws:

$$n(r) = n_0 \left(\frac{r}{r_0} \right)^{-\gamma} \left(1 + \frac{r}{r_0} \right)^{\gamma-A}, \quad (13)$$

$$\rho(r) = \rho_0 \left(\frac{r}{r_M} \right)^{-\Gamma} \left(1 + \frac{r}{r_M} \right)^{\Gamma-B}. \quad (14)$$

A number of studies have found a large-radius ($r \gtrsim 1$ pc) dependence $n(r) \sim r^{-1.8}$ for the old stellar population (Schödel et al. 2007, and references therein). We accordingly set $A = 1.8$ in eq. (13). The form of $n(r)$ at smaller radii is less well determined. As noted above, the number counts of late-type stars appear to flatten or even decline inside ~ 0.5 pc, and this result was recently strengthened via a new analysis by Buchholz, Schödel, & Eckart (2009, submitted to A&A). Based on the latter paper, we set $\gamma = 0.5$ and $r_0 = 20''$ in eq. (13) (r_0 is larger than the break

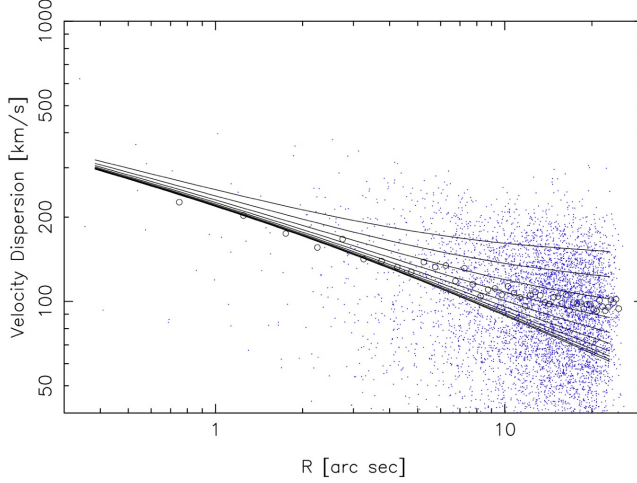


Fig. 13. Isotropic modelling of the nuclear cluster including a contribution to the gravitational potential from the stars, assumed to have a mass density that falls off as $\rho \propto r^{-\Gamma}$, $\Gamma = 1$ over the radial range covered by the data. $M_{\text{BH}} = 3.6 \times 10^6 M_{\odot}$, and the various curves show the predicted velocity dispersion profiles for a range of normalizations of the stellar density, from $5 \times 10^4 M_{\odot} \leq M_{\star}(< 1 \text{ pc}) \leq 5 \times 10^6 M_{\odot}$ with equal logarithmic steps. Other symbols are as in Fig. 12.

radius given in Schödel et al. (2007) because the latter must be de-projected.). We note that $\gamma = 0.5$ is the flattest slope that is consistent with an isotropic phase-space density in a point-mass potential.

For the mass density $\rho(r)$ we set $r_M = 5 \text{ pc} \approx 100''$ and $B = 4$, yielding essentially a single power-law dependence, $\rho \sim r^{-\Gamma}$, over the radial range of our data. For a given $n(r)$, the three remaining parameters are the BH mass, the mass density slope Γ , and the mass density normalization ρ_0 . These can be written

$$M_{\text{BH}}, M_{\star}(< 1 \text{ pc}), \Gamma \quad (15)$$

where $M_{\star}(< 1 \text{ pc})$ is the stellar mass within one parsec.

Figure 13 illustrates the effects of including a non-zero stellar mass. Each model shown there has $M_{\text{BH}} = 3.6 \times 10^6 M_{\odot}$ and $\Gamma = 1$, i.e. the stellar mass density falls as $\sim r^{-1}$ in the region where there are velocity data. The best fit from this series is obtained for $M_{\star}(< 1 \text{ pc}) \approx 1.5 \times 10^6 M_{\odot}$. Because the central slope of $n(r)$ ($\gamma = 0.5$) is flatter than was assumed for Fig. 12 ($\gamma = 1.5$), the observable effect of the BH on the stellar motions near the projected center is smaller and a more massive BH is required to reproduce the inner velocity dispersions.

Figure 14 summarizes the fits of a set of mass models computed on a 3d grid in parameter space. For each (M_{BH}, Γ) , the plot shows contours of two quantities associated with the model that best fits the kinematical data: $M_{\star}(< 1 \text{ pc})$ and χ^2 . The red (dashed) contours show confidence intervals of 68%, 90%, and 99% (Lampton et al. 1976). The overall best-fit model from this set has a negative Γ , i.e., the mass density *increases* with radius. However the value of Γ is very weakly constrained, especially if M_{BH} is considered to be a free parameter. Moving up along the near-plateau in χ^2 , a decreasing BH mass can be compensated for by increasing the stellar mass and by making the mass density profile more steep, mimicking a central point mass. Figure 15 plots the minimum χ^2 value at each M_{BH} . The

“correct” BH mass, $4.0 \times 10^6 M_{\odot}$, is consistent at the 90% level with the isotropic modelling.

The best-fitting isotropic models all require a non-zero distributed mass. If $\rho(r)$ is assumed to decrease with radius, i.e. $\Gamma > 0$, then the implied mass within 1 pc is always greater than $\sim 0.4 \times 10^6 M_{\odot}$ for $3.5 \times 10^6 \lesssim M_{\text{BH}}/M_{\odot} \lesssim 4.5 \times 10^6$. If $M_{\text{BH}} = 4.0 \times 10^6 M_{\odot}$ and $\Gamma > 0$, the distributed mass within 1 pc must be greater than $\sim 0.5 \times 10^6 M_{\odot}$.

7.4. Anisotropic modelling

We next consider models that allow the two independent components (σ_r, σ_t) of the stellar velocity dispersion to be different at each intrinsic radius r . In principle, complete knowledge of the two proper-motion velocity dispersion profiles $\sigma_R(R), \sigma_T(R)$, together with the deprojected number-density profile $n(r)$, is equivalent to complete knowledge of $\sigma_r(r)$ and $\sigma_t(r)$ (Leonard & Merritt 1989). The enclosed mass would then follow uniquely from the Jeans equation. In practice, we only measure the proper motions over a limited range of radii, and inferences about the mass density will in general depend on the degree of anisotropy beyond the last measured point (e.g. Merritt 1988). In addition, as discussed above, the assumption of spherical symmetry in the modelling is not completely consistent with the observed behavior of the proper motions at large radii. For these reasons, a direct deprojection of the proper-motion velocity dispersions was deemed undesirable. Instead we constructed anisotropic models and compared their projected properties with the data. We stress that our algorithm is completely nonparametric in terms of its treatment of $\sigma_r(r)$ and $\sigma_t(r)$.

The relation between the intrinsic and projected velocity dispersions is

$$\begin{aligned} \Sigma(R)\sigma_R^2(R) &= 2 \int_R^{R_{\text{max}}} \frac{r dr}{\sqrt{r^2 - R^2}} \left[\frac{R^2}{r^2} n(r)\sigma_r^2(r) + \left(1 - \frac{R^2}{r^2}\right) n(r)\sigma_t^2(r) \right], \\ \Sigma(R)\sigma_T^2(R) &= 2 \int_R^{R_{\text{max}}} \frac{r n(r)\sigma_t^2(r)}{\sqrt{r^2 - R^2}} dr. \end{aligned} \quad (16)$$

We chose as our undetermined function $f(r) \equiv n(r)\sigma_r(r)^2$ and specified this function on a grid in radius. Iterations consisted in varying the values f_i on the grid. At each iteration, $n(r)\sigma_t(r)^2$ was computed from the f_i and from the assumed $M(r)$ and $n(r)$ using the Jeans equation in the form

$$n(r)\sigma_t^2(r) = f(r) + \frac{r}{2} \frac{df}{dr} + \frac{GM(r)n(r)}{2r}. \quad (17)$$

Because $f(r)$ appears as a derivative in this expression, we needed to impose a constraint to ensure that f remains a smooth differentiable function during the optimization. We did this in the standard way by adding a penalty function to χ^2 , of the form

$$P_{\lambda}(n\sigma_r^2) = \lambda \int_0^{\infty} \left[\frac{d^2 \log f}{d \log r^2} \right]^2 dr \quad (18)$$

with λ a parameter that controls the degree of smoothness. The expression (18) “penalizes” functions $n\sigma_r^2$ that fluctuate too rapidly in their dependence on r . In addition, this penalty function has the desirable property that any power-law dependence of $n\sigma_r^2$ on r is defined to be “perfectly smooth,” i.e. $P = 0$. Since the form of $n\sigma_r^2(r)$ in the vicinity of a SMBH is likely to be close to a power law, smoothing via the penalty function (18) is not likely to bias the results substantially even if λ is large. In practice, λ

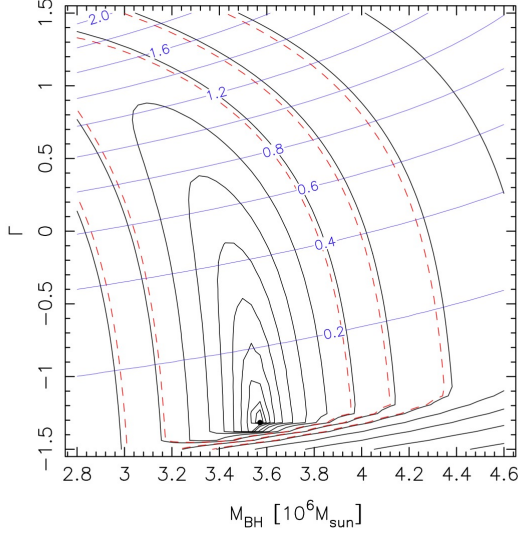


Fig. 14. Results of isotropic modelling of the NSC assuming the mass model of eq. (14). The three parameters (M_{BH} , M_{\star} , Γ) were varied in comparing the fit of the model to the velocity dispersion data, eq.(10). Black (thick) curves are contours of constant χ^2 , separated by a constant factor of $10^{0.3}$; dashed (red) curves indicate (68%, 90% and 99%) confidence intervals. Blue (thin) curves are contours of the best-fit value of $M_{\star}(r < 1\text{ pc})$ at each value of (M_{BH} , Γ); these curves are labelled by $M_{\star}/10^6 M_{\odot}$. The overall best-fit model is indicated by the filled circle.

was chosen to be as small as possible consistent with a reasonably smooth result for $\sigma_r(r)$ (we took $0.0001 \leq \lambda \leq 0.003$).

The goodness of fit of the model to the data was defined in a manner analogous to the isotropic case:

$$\chi^2 = \sum_{i=1}^N \frac{[V_{R,i}^2 - \sigma_R^2(R_i)]^2}{\Delta_R^2(R_i^2)} + \sum_{i=1}^N \frac{[V_{T,i}^2 - \sigma_T^2(R_i)]^2}{\Delta_T^2(R_i^2)}. \quad (19)$$

In this expression, the functions $\sigma_R(R)$ and $\sigma_T(R)$ are understood to be related to $\sigma_r(r)$ and $\sigma_t(r)$ via equations (16). Optimization (i.e. minimization of $\chi^2 + P_{\lambda}$) was carried out using the NAG routine E04FYF. The minimum reduced χ^2 of our anisotropic models was 1.06.

The radial grid on which $n\sigma_r^2$ was specified extended to 50 pc, well beyond the outermost measured velocity at ~ 1 pc. It was discovered that allowing complete freedom in $n\sigma_r^2$ in the region $1\text{ pc} \leq r \leq 50\text{ pc}$ led sometimes to solutions in which the anisotropy was very large and/or increasing at large radii. Such models reproduce the observed departures from a Keplerian velocity falloff at ~ 1 pc by placing stars on very eccentric orbits beyond the region where the solution is strongly constrained by the data. While such models are physically permissible, they seem rather unlikely. We focus here on models that were constrained at large radii to be isotropic. Specifically, we forced $\sigma_r(r)$ to be equal to the isotropic $\sigma(r)$, equation (4), at all $r \geq r_{\text{iso}} = 3\text{ pc} \approx 60''$. Imposing this constraint (which results in a different $\sigma_r(r)$ profile at $r \geq r_{\text{iso}}$ pc for each assumed $M(r)$) guarantees that $\sigma_t(r) = \sigma_r(r) = \sigma(r)$ at $r \geq r_{\text{iso}}$.

The results are summarized in Figures 16-19. Overall the results are similar to those obtained under the assumption of isotropy, except that the confidence intervals are somewhat narrower, due to the additional information contained within the two

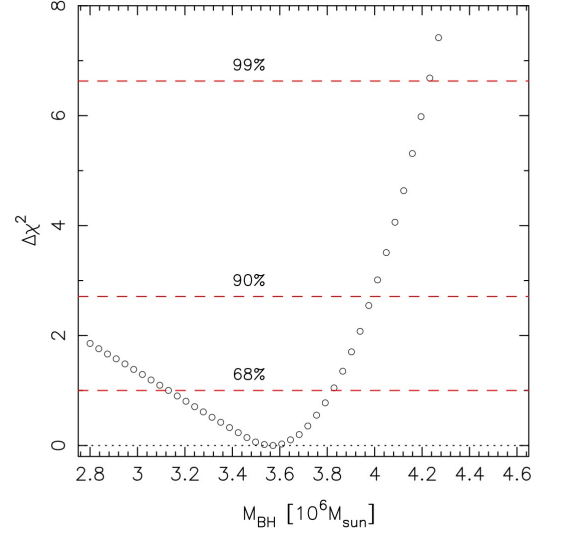


Fig. 15. $\Delta\chi^2$ vs. BH mass for the isotropic models. Plotted is the minimum χ^2 value at each M_{BH} among the set of (M_{\star} , Γ) values considered in Fig. 14. Dashed (red) lines show values of $\Delta\chi^2$ corresponding to (68%, 90% and 99%) confidence, as indicated.

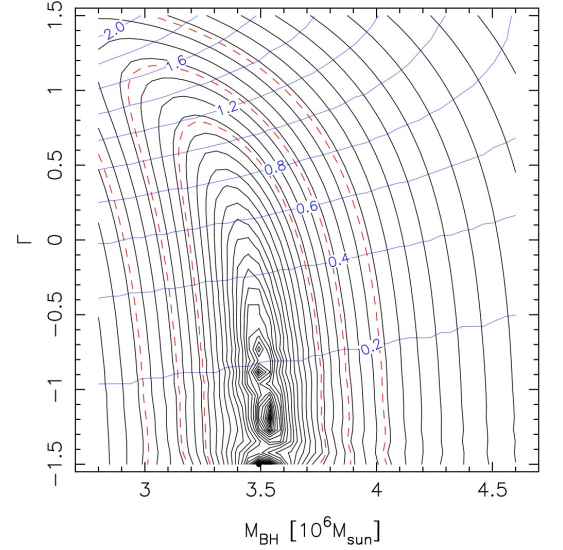


Fig. 16. Like Fig. 14, but for the anisotropic modelling.

velocity dispersion components. The 90% confidence bounds on M_{BH} (Figure 17) are $3.1 \times 10^6 M_{\odot} \lesssim M_{\text{BH}} \lesssim 3.8 \times 10^6 M_{\odot}$.

Figure 18 shows the kinematics of the best-fit solution, with $M_{\text{BH}} = 3.6 \times 10^6 M_{\odot}$. The stellar velocities are mildly radially anisotropic at $r \lesssim 0.1$ pc and mildly tangentially anisotropic for $0.1\text{ pc} \leq r \leq 1$ pc; by construction, they are isotropic beyond ~ 3 pc.

Figure 19 shows the kinematics of a second solution with $M_{\text{BH}} = 4.0 \times 10^6 M_{\odot}$ and $\Gamma = 0$; the stellar mass within 1 pc is $0.5 \times 10^6 M_{\odot}$. The differences with the global best-fit model are slight, consisting mostly of a larger degree of anisotropy.

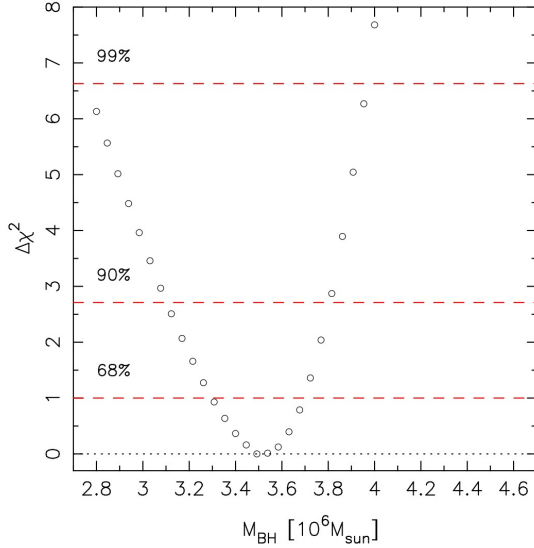


Fig. 17. Like Fig. 15 but for the anisotropic modelling.

We note that both the isotropic and anisotropic modelling seem to rule out securely a mass density profile as steep as $\rho \sim r^{-2}$.

8. Discussion

8.1. Rotation of the NSC

An early spectroscopic study by McGinn et al. (1989) found evidence for rotation of the GC NSC, at least beyond 1 pc distance from Sgr A*. Other earlier studies based on spectroscopic observations have found no signs of net rotation in the late-type stars in the nuclear star cluster (Sellgren et al. 1990; Genzel et al. 2000; Figer et al. 2003, the latter present a detailed analysis). However, these studies were based on small numbers of late-type stars in the central parsec of the Milky Way and did therefore probably not reach the necessary accuracy of a few km/s needed to detect rotation in the innermost parsec.

Trippe et al. (2008) found clear signs for an overall rotation of the NSC parallel to galactic rotation through the analysis of proper motions and new adaptive-optics assisted integral field spectroscopic observations. The results of our work confirm their finding of an overall rotation of the NSC in the Galactic. Trippe et al. (2008) provide a model for the rotation velocity that increases linearly with Galactic longitude with a value of $1.42 \pm 0.36 \text{ km s}^{-1}$ per arcsecond projected distance from Sgr A* along Galactic longitude.

We show the data of McGinn et al. (1989) and Trippe et al. (2008) in Fig. 20. Figure 20 includes *all* data from McGinn et al. (1989). For unknown reasons, Trippe et al. (2008) only show 5 of 17 data points of McGinn et al. (1989). The plot shows that while the model of Trippe et al. (2008) fits well all the data in the central few tens of arcseconds, the rotation curve may be considerably flatter at Galactic longitudes $|l| \gtrsim 40''$. Due to the strong and highly variable extinction toward the GC, the data of McGinn et al. (1989) may sample quite different depths and therefore stellar populations. We may therefore speculate on the possibility that we actually see *two* distinct rotating systems in the GC, one with a steeper and one with a flatter rotation curve. In this context it appears worthwhile to point out the recent result

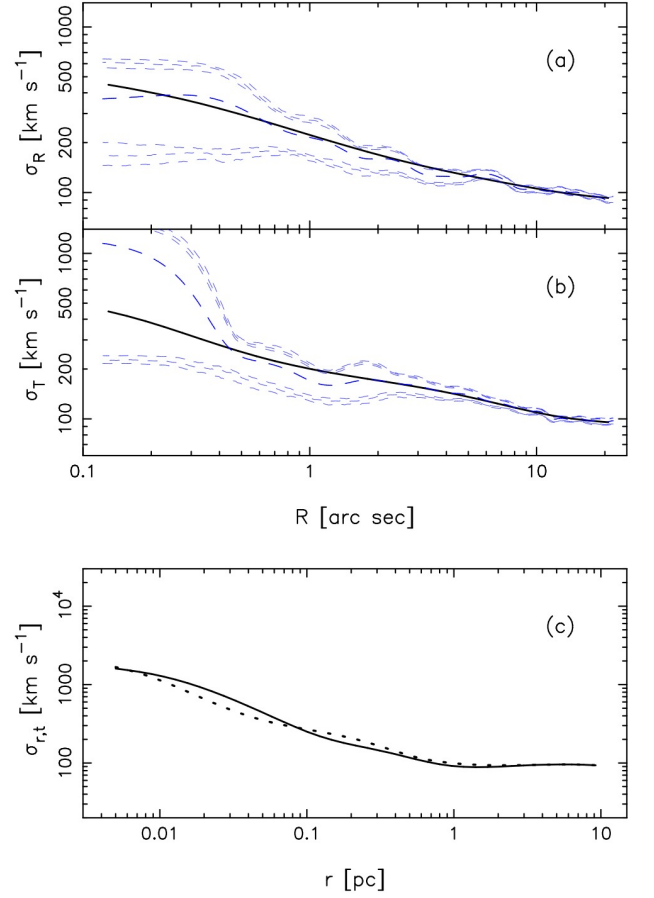


Fig. 18. Best-fit anisotropic model. (a) and (b) are the projected, radial and tangential velocity dispersions (black/solid lines), compared with a kernel-based velocity dispersion profile and associated (90%,95%,98%) confidence intervals (blue/dashed lines). (c) Intrinsic velocity dispersions: radial (solid) and tangential (dashed) lines.

of Seth et al. (2008b) from integral-field spectroscopy of the nuclear star cluster of NGC 4244: They identify a younger disk-like stellar population superposed on an older spheroidal component. It may be that a similar situation presents itself in the center of the Milky Way. A nuclear disk exists the GC in addition to the spherical NSC by Launhardt et al. (2002). However, an important caveat is the fact that the size scale of the nuclear disk is orders of magnitudes larger than the one of the NSC, unlike the situation in NGC 4244.

As pointed out by Seth et al. (2008b), rotation of the NSC parallel to Galactic rotation implies that it may at least in part have formed by accretion of gas or star clusters from the galactic disk. This is of great importance for understanding the origin of nuclear star clusters in galaxies (for a brief overview of some formation scenarios see, e.g., Böker 2008).

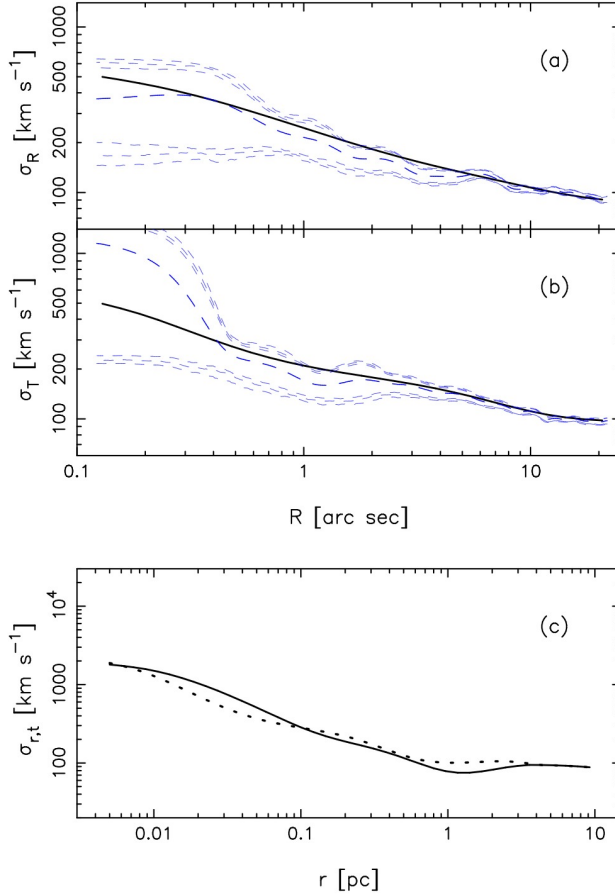


Fig. 19. Anisotropic model with $M_{\text{BH}} = 4.0 \times 10^6 M_{\odot}$, $\Gamma = 0$, and $M_{\star}(r < 1\text{pc}) = 0.5 \times 10^6 M_{\odot}$. Curves and symbols are defined as in Fig. 18.

8.2. Isotropy/anisotropy

Consistent with earlier work (e.g. Genzel et al. 2000) we find evidence for tangential mean motion in the central arcseconds (see Fig. 4). This anisotropy is related to the presence of young, massive stars, a significant fraction of which shows coherent motion within one (or possibly two) stellar disks (Levin & Beloborodov 2003; Genzel et al. 2003; Lu et al. 2006; Paumard et al. 2006). Lu et al. (2008) discard the existence of the counter-clockwise disk and show that about 50% of the young stars belong to the clockwise rotating disk, while the other 50% appear to have more randomized motions. Our analysis here shows that, after excluding the early-type stars, the cluster appears close to isotropic (see lower left panel in Fig. 6, right panel in Fig. 10, and left panel in Fig. B.3). The situation may be different in the innermost $6''$, where the data are somewhat more ambiguous (see lower left panel of Fig. 6). Our anisotropic Jeans models also result in solutions that are close to isotropy (see Figs. 18 and 19). A caveat is, however, the rotation of the cluster, which could mask anisotropy with a signature smaller than or comparable to the rotation signature.

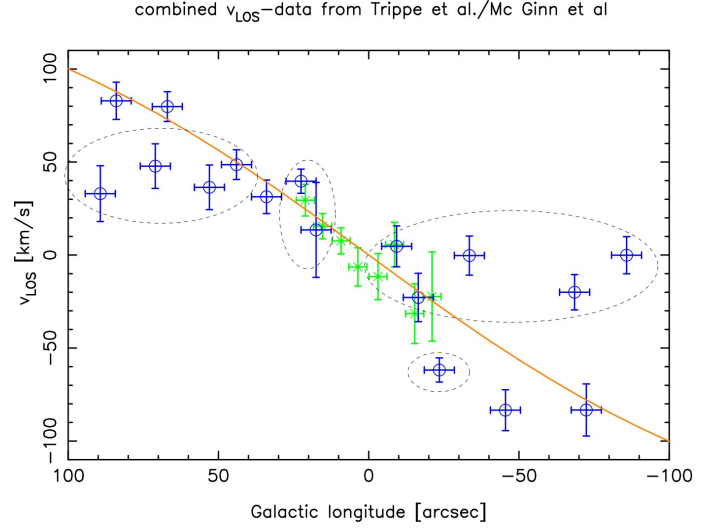


Fig. 20. Line-of-sight velocity vs. Galactic longitude. Blue circles: measurements from McGinn et al. (1989); green stars: measurements from Trippe et al. (2008). The straight orange line indicates the model of Trippe et al. (2008). The dashed black ellipses show the data that are not shown in Fig. 12 of Trippe et al. (2008).

8.3. Mass modeling: black hole mass

Our modeling of the proper motion data yields a best-fit black hole mass of $3.6^{+0.2}_{-0.4} \times 10^6 M_{\odot}$ (68%) under the isotropic assumption, and $3.5^{+0.15}_{-0.35} \times 10^6 M_{\odot}$ if anisotropy is allowed (for an assumed distance of 8 kpc to the GC). The smaller uncertainties of the anisotropic model may appear counter-intuitive. However, when we go from isotropic to anisotropic models, we also go from one observed function (the isotropized velocity dispersion profile) to two observed functions (the two, radial and tangential dispersion profiles). So from a mathematical point of view, the ratio between the number of "model functions" and the number of "data functions" remains the same. There is no obvious reason why the error bars on BH mass obtained from the isotropic modelling should be tighter, or looser, than those obtained from the anisotropic modelling.

A BH mass of $4.0 \times 10^6 M_{\odot}$ is consistent with the modelling at the 90% (isotropic) and 99% (anisotropic) levels. Thus, while a value for M_{BH} slightly lower than the currently canonical value (Ghez et al. 2003; Eisenhauer et al. 2005; Ghez et al. 2005, 2008) is preferred by our modelling, our results are still consistent with that value.

Mass estimates of Sgr A* based on proper motions (e.g. Ghez et al. 1998; Chakrabarty & Saha 2001; Eckart et al. 2002; Genzel et al. 2000) have routinely provided lower values than what has been found by the analysis of stellar orbits. The orbit of the star S2/S0-2 has consistently provided higher black hole masses with high precision (see above). Determining the mass of Sgr A* from a stellar orbit is straightforward and relies solely on the assumption that the star moves on a Keplerian orbit and that higher order effects can be neglected (see, e.g., Rubilar & Eckart 2001; Weinberg et al. 2005; Zucker et al. 2006; Ghez et al. 2008, and others). Mass estimates based on proper motions, on the other hand, have to make a number of assumptions on the spatial and velocity structure of the cluster that can bias the results.

Source confusion and the fast proper motion of stars within $R \approx 0.5$ pc of Sgr A* may have biased the proper motions of stars

near Sgr A* in early work (e.g., Genzel et al. 1997; Ghez et al. 1998; Genzel et al. 2000) toward lower values of the velocity dispersion (identification of slow stars is easier between epochs; faint and fast stars become easily confused with brighter ones). In this work, we only use high-resolution AO observations at an 8 m-class telescope. The bias toward low velocity dispersion therefore should be minimal. Also, the modeling uses proper motions in the entire central parsec. This decreases considerably the weight of the possibly biased proper motions within $R \approx 0.5''$.

The black hole masses from both our isotropic and anisotropic models are in reasonable agreement with the measurements from the orbit of S2/S0-2. We believe that the most important source of bias for the determination of the BH mass from proper motions is the assumed law for the radial dependence of the tracer population from distance to Sgr A*. Earlier work has usually assumed steep power-laws (e.g., $n(r) \propto r^{-2.5}$ in Genzel et al. 2000) for the tracer population. This leads inevitably to an under-estimation of the 3D distances of the tracer stars from the BH because the number density behaves rather like $n(r) \propto r^{-1.2}$ in the central parsec (Schödel et al. 2007). The issue becomes even more important when the analysis is limited to the late-type stars near Sgr A*, whose density may be even decreasing toward the black hole (see, e.g., Figer et al. 2003; Genzel et al. 2003; Buchholz, Schödel, & Eckart, 2009, submitted to A&A). In our analysis we have assumed $n(r) \propto r^{0.5}$ for the late-type stars near Sgr A*. This is the flattest power-law still consistent with isotropy. The issue is worth further investigation.

8.4. Mass modeling: cluster mass

Our basic modeling assumptions are stationarity and spherical symmetry of the cluster. We show that the proper motion data *cannot be explained by just a point mass at the position of Sgr A**. Both isotropic and anisotropic Jeans models require a mass within $r \leq 1$ pc of $> 0.5 \times 10^6 M_\odot$, in addition to the point mass of the black hole, Sgr A* (under the assumption that $\Gamma > 0$, i.e. the mass density increases toward Sgr A*). Also, the Leonard Merritt moment mass estimator shows clear evidence for an increasing contribution of extended/stellar mass to the gravitational potential at $R \gtrsim 0.4$ pc. The result for the amount of extended mass within $r = 1$ pc is insensitive to the exact assumed density-law for the tracer population in the immediate vicinity of Sgr A* (see above).

As an alternative to the assumptions made above, we can model the proper motions assuming that the stellar mass density is proportional to the stellar number density, eq. (13), and that the mass of the black hole is the value given by modelling of the S-star orbits, $4.0 \times 10^6 M_\odot$. The single remaining free parameter is then the normalization of the stellar mass density, i.e. the mass-to-light ratio of the stars. Figure 21 shows how the fit to the proper motion data varies as a function of the stellar mass under these assumptions, for both isotropic and anisotropic cases. The preferred value for the stellar mass within 1 pc is seen to be $\sim 1.5 \times 10^6 M_\odot$ (isotropic) and $\sim 1.1 \times 10^6 M_\odot$ (anisotropic).

While early work (e.g., Sellgren et al. 1990; Eckart et al. 1993) found enclosed masses at $R \approx 0.5$ pc that are comparable to what we have derived in this work, almost negligible amounts of extended, i.e. stellar, mass within $R < 1$ pc were reported in later work (see, e.g., Haller et al. 1996; Genzel et al. 2000; Schödel et al. 2003). However, with these low values it would be difficult to reconcile the high mass of the NSC of $3.5 \pm 1.5 \times 10^7 M_\odot$ (Launhardt et al. 2002) with the almost zero mass in the central parsec: the old mass models would not reach

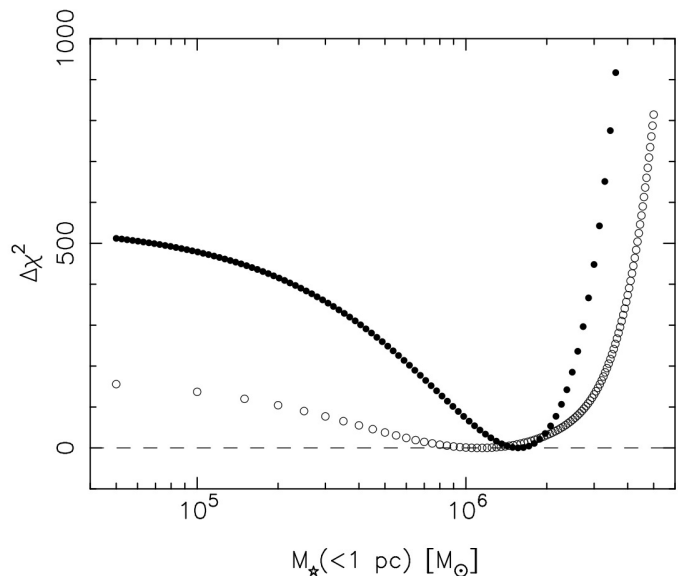


Fig. 21. Fits to the proper motion data when the BH mass is fixed to $4.0 \times 10^6 M_\odot$ and the stellar mass density is assumed proportional to the stellar number density. *Filled circles*: isotropic modelling; *open circles*: anisotropic modelling.

the integrated mass of the NSC within its radius of $\lesssim 10$ pc. High precision measurements of the velocity of the maser star IRS 9, located at $R = 0.33$ pc may also indicate an enclosed mass of a few times $10^5 M_\odot$ in addition to the mass of Sgr A* (Reid et al. 2007). Schödel et al. (2007) have roughly estimated the enclosed extended mass in the central parsec by combining the measured line-of-sight velocity dispersion of late-type stars in the central pc, assuming isotropy, with the derived density structure of the stellar cluster. They found that the enclosed mass in the GC may start to rise significantly already at projected distances from Sgr A* as low as $R \approx 0.3$ pc.

What can be the reason why the enclosed stellar mass at the GC has been underestimated in the past decade? We believe that there are primarily two factors responsible. In the absence of adequately sampled proper motion or line-of-sight velocity measurements at distances $R \gtrsim 0.5$ pc, it was necessary to include measurements of gas velocities in the circum nuclear disk (e.g., Guesten et al. 1987; Christopher et al. 2005) into the mass estimates. However, gas can be subject to winds, magnetic fields, or cloud collisions, contrary to stars, which are ideal test particles of the gravitational potential. A second factor that influenced previous mass estimates of the stellar cluster around Sgr A* were model assumptions and the related combination data sets within a too simple model (just a bulge, no NSC, no nuclear disk). In principle, earlier assumptions ignored the existence of the MW NSC. The effect was to include bulge velocity dispersions into the mass estimates (Haller et al. (1996), e.g., include measurements at distances of ~ 100 pc from Sgr A* into their analysis, while Genzel et al. (1996) assume $\sigma_\infty = 55$ km s $^{-1}$ in their Jeans modelling. However, the velocity dispersion of the Milky Way bulge is fairly uncertain (see Merritt & Ferrarese 2001; Tremaine et al. 2002). Also, the MW NSC may well be a system that is dynamically decoupled from the bulge.

As described in the introduction, observations in the 1990s (mainly by HST) revealed the existence of nuclear star clusters as entities that are morphologically and dynamically separate from the bulges. This cannot be neglected in the determination of the MW NSC mass. If the velocity dispersion in the bulge is

lower than in the NSC, then spectroscopically measured velocity dispersions outside of the central parsec may already be biased toward low values (due to superposition of bulge stars along the line of sight toward the NSC). This may be the reason why Rieke & Rieke (1988) obtain a line-of-sight velocity dispersion from late type stars in the region $0.36 < R < 6.5$ pc ($\sigma = 75$ km s⁻¹) that is lower than the $\sigma \approx 100$ km s⁻¹ for late-type stars within $R < 0.8$ pc measured by Genzel et al. (2000), Figer et al. (2003), or Zhu et al. (2008).

What are the consequences of the – compared to previously published values – significantly increased stellar mass in the cluster around Sgr A*? As concerns theoretical models of the dynamics of gas and stars at the GC, future modelling must take into account that the gravitational potential at the GC starts deviating from that of a point mass significantly already at a distance of roughly 0.5 pc from Sgr A*. As pointed out by Schödel et al. (2007) an important implication of the non-negligible mass of the NSC implies that the CND cannot be modeled as a simple disk in Keplerian rotation. This is also supported by the mass models of Figer et al. (2003). Also, the dynamics of the minispiral (see Lacy et al. 1991; Vollmer & Duschl 2000; Paumard et al. 2004) will probably have to be revised (also to take into account the $\sim 30 - 50\%$ increased black hole mass, compared to the values used in some of these models).

Our models do not allow us to set strong constraints on the power-law index of the assumed mass distribution. Assuming increasing mass density toward the black hole, values of $0 \leq \Gamma \leq 1.5$ can be reconciled with the models. The power-law index of the stellar density profile reported by Schödel et al. (2007) is 1.19 ± 0.05 in the central parsec. This value lies within the range of the Γ -values from our models. A caveat at this point is, however, that Schödel et al. (2007) did not explicitly discard early-type stars from their number counts and therefore report some sort of average value for early and late-type populations. When only the late-type stars are considered, the density profile may be considerably flatter or even slightly inverted in the immediate environment of Sgr A* (see, e.g., Figer et al. 2003; Genzel et al. 2003, or Buchholz, Schödel, & Eckart, 2009, submitted to A&A). The exact density profile of the late-type stars is an important issue that needs to be addressed by future research.

A value as high as $\Gamma = 2.0$ in the central parsec appears to be safely ruled out (Figs. 14 and 16). The parameter Γ is of great importance because it determines the radial profile of the mass density. The latter has important consequences for stellar dynamics because the high densities shorten the relaxation time and increase the probability for close stellar encounters or collisions. There may be a non-negligible probability of stellar collisions at radii $r < 0.2$ pc during the lifetimes of stars, causing – among other effects – the destruction of the envelopes of giant stars (see Alexander 2003; Freitag et al. 2008). The derived collision probabilities presented in Freitag et al. (2008) are observationally supported by the distinct lack of late-type (giant) stars within $R \approx 6'' - 8''$ of Sgr A* (see Genzel et al. 1996; Haller et al. 1996; Figer et al. 2003; Genzel et al. 2003; Zhu et al. 2008). The collision rates reported by Freitag et al. (2008) are based on steep ($n(r) \propto r^{-1.5}$) density profiles. While such a steep profile is not excluded by our analysis and the mass densities of $\geq 10^7$ M_⊙ pc⁻³ required by the models of Freitag et al. may be consistent with our estimates, it is nevertheless important to note that flatter mass profiles are preferred by our Jeans modeling. Also, the profiles derived from stellar number counts suggest rather shallow profiles near Sgr A* (see above).

It may appear surprising that our models also allow for a decreasing mass density toward Sgr A*. As far as we are aware,

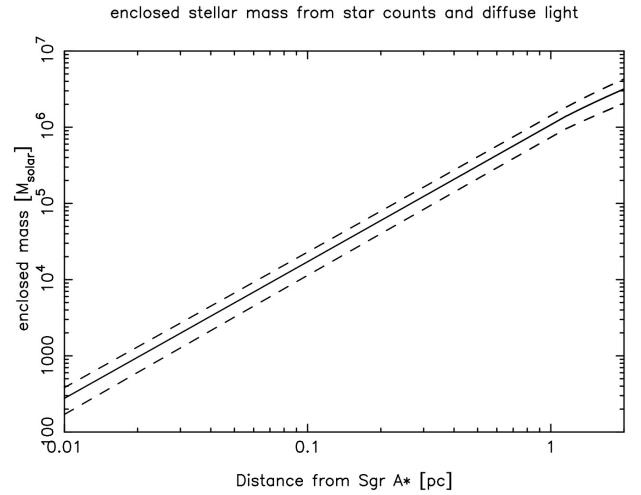


Fig. 22. Enclosed stellar mass vs. distance from Sgr A*, derived from star counts and diffuse light density in the central parsec of the GC, using the broken-power law structure of the cluster from Schödel et al. (2007). The dashed lines indicate the statistical 1σ uncertainties. We estimate that the systematic error of this simple model is of the order a factor of ~ 2 (normalization of diffuse light density and extinction).

no one in the past has even allowed the possibility of “centrally evacuated” mass models. The standard approach (e.g. in the recent paper by Trippe et al.) is to assume a monotonically-decreasing mass density at the outset. So, it is quite possible that other modellers would have obtained this result if they had looked for it. The basic reason why models with central “holes” in the mass density are preferred, is that the observed velocity dispersion profile is essentially Keplerian in the inner 0.1 pc, leaving little room for a distributed component in this region. But we emphasize that the preference for such models is weak.

An inverted mass model would be expected theoretically if (a) a binary SMBH existed in the past, and (b) the time scale for dynamical regeneration of a density cusp after it has been destroyed by a binary SMBH is longer than 10 Gyr (e.g., Merritt & Szell 2006).

8.5. Mass-to-light ratio

How does our finding of $0.5 - 2.0 \times 10^6$ M_⊙ of extended mass in the central parsec compare with an estimate derived from the stellar light? We produced a simple model of the enclosed stellar mass vs. distance from Sgr A* by using the parameters of the NSC structure determined by Schödel et al. (2007). A broken power-law was assumed, with an inner power-law index of $a_{in} = 1.2 \pm 0.05$ and outer power-law index of $a_{out} = 1.75 \pm 0.1$. The break radius of $R_{br} = 0.22 \pm 0.04$ pc given in Schödel et al. (2007) was de-projected, using the given values of a_{in} and a_{out} together with the number counts of Schödel et al. (2007) obtaining $r_{br} = 0.8 \pm 0.2$ pc. The enclosed mass of individually visible stars in the central parsec was then calculated with the broken power-law and using the number counts of Schödel et al. (2007). An average mass of 3 M_⊙ was assigned to each star (see Fig. 16 in Schödel et al. 2007). For the contribution of the unresolved stellar population we used the same cluster parameters. The diffuse light due to the unresolved stars was normalized to a value of 2.0×10^{-3} Jy arcsec⁻² at a projected distance from Sgr A* of $R = 10''$. This value was determined from the Ks-band image of 13 May 2005 (see Table 1), using a field of low stellar den-

sity at $R = 10''$ and avoiding known field of high extinction or strong dust emission. The diffuse light density was converted to a mass estimate by using the Ks-band luminosity of the sun, at a distance of 8 kpc and assuming an extinction of 3.3 magnitudes in the K-band.

The resulting plot of enclosed stellar, i.e. luminous mass vs. distance from Sgr A* is shown in Fig. 22. The dashed lines indicate the 1σ uncertainty that results from the uncertainties of the parameters of the cluster structure. The mass due to the unresolved stellar population (responsible for the diffuse light) makes up $> 98\%$ of the stellar mass in this simple estimate. We estimate that there is a systematic uncertainty of 30% related to our normalization of the diffuse light density at $R = 10''$. An additional source of systematic uncertainty is the extinction toward the GC, for which we estimate an absolute uncertainty of about 0.5 magnitudes. Hence, there may be a systematic uncertainty of a factor 2 related to the plot shown in Fig. 22.

A detailed estimate of the stellar mass in the central parsec of the NSC via its luminosity is non-trivial and beyond the scope of this paper. However, the simple model in Fig. 22 demonstrates that the visible stellar mass (through star counts and diffuse light density) can easily account for an extended/stellar mass around $1 \times 10^6 M_\odot$ in the central parsec of the NSC.

Alternatively, we can use the stellar mass estimate within the central parsec as given in sub-section 8.4 above (assuming that the mass density is proportional to the stellar number density and fixing the BH mass to $4.0 \times 10^6 M_\odot$): $\sim 1.5(1.1) \times 10^6 M_\odot$ for the case of isotropy (anisotropy). With the above given normalization of the diffuse light density we obtain $M/L = 1.4(1.1) M_\odot/L_{\odot,Ks}$ for the isotropic (anisotropic) case. Here, $L_{\odot,Ks}$ is the luminosity of the sun in the Ks-band. As described in the paragraph above, this result is uncertain by a factor ~ 2 (normalization of diffuse light density and extinction; uncertainty of the mass estimate has not been taken into account here). Note that this analysis refers only to the *diffuse* light density, i.e. after subtraction of the individually detected stars. As shown in Schödel et al. (2007), the detected stars, with $\text{mag}_{Ks} \lesssim 17.5$ emit more than 99% of the total light. If they were included in the analysis, the M/L ratio would be a factor of ~ 100 lower.

There are observationally supported claims for the existence of the order 10^4 neutron stars and stellar mass black holes in the central parsec (Muno et al. 2005). The large uncertainties involved in the determination of the mass-to-light ratio in the central parsec and the small total mass of these stellar remnants ($< 10^5 M_\odot$) compared to the enclosed total stellar mass ($\sim 10^6 M_\odot$) in the central parsec means that the claim of (Muno et al. 2005) cannot be tested (or can only be tested with great difficulty) via estimates of the mass-to-light ratio in the central parsec.

8.6. Comparison with similar work

Trippe et al. (2008) also modelled the kinematics of the old stellar population using proper motion velocities, and obtained estimates of M_{BH} and of the distributed mass. Like us, Trippe et al. assumed a spherical model for the NSC, but their approach differed from ours in essential ways. Trippe et al. did not construct a self-consistent model for the nuclear star cluster. Instead, they considered only the intrinsic velocity dispersions parallel to the Galactic latitude and longitude, which they called $\sigma_l(r)$ and $\sigma_b(r)$, and assumed that both were functions only of the radius. The observed velocity dispersions, $\sigma_L(R)$ and $\sigma_B(R)$, were then fit with projected, parametrized representations of the two intrinsic functions. This approach allowed Trippe et al. to deal in

a natural way with the observed alignment of the proper motion velocities with Galactic coordinates beyond $\sim 6''$. They were also able to take into account the overall rotation of the cluster, which we ignored (for reasons that were justified above). However, Trippe et al.'s description is incomplete since it leaves the third component of the velocity ellipsoid – the component along the line of sight – unspecified. The symmetries, if any, of the velocity ellipsoid, or the orientation of its principle axes with respect to the coordinate axes, were likewise unspecified. Because Trippe et al. did not construct complete models, it is impossible to convert their fitted functions into unique estimates of the enclosed mass.

These differences may account for the much lower BH mass found by Trippe et al., $M_{BH} \approx 1.2 \times 10^6 M_\odot$, although it is not clear to us which of their assumptions most crucially affected the results of the modelling.

Trippe et al. cited an argument by Kormendy & Richstone (1995) to explain their very low inferred value of M_{BH} . However we were unable to follow the reasoning. Kormendy and Richstone noted that the effects of anisotropy on masses inferred from the Jeans equation can be more significant if the central density gradient is small. We agree; but since Trippe et al. explicitly assumed isotropy when writing the Jeans equation, the Kormendy & Richstone argument would not seem to apply. In fact, we would argue that the expected bias in the Trippe et al. mass should go in the opposite direction. Trippe et al. assumed a perfectly flat core for the number density distribution. This is inconsistent with their assumption of isotropy, since an isotropic population must have a density that rises at least as fast as $r^{-0.5}$ near a BH. Had they used a steeper central profile, they would likely have inferred an even *smaller* BH mass, for the reasons discussed above.

9. Summary

We have analyzed several years of adaptive optics assisted imaging of the Milky Way nuclear star cluster in order to examine the cluster kinematics. The mass of the supermassive black hole Sgr A* and the extended mass within 1 pc of Sgr A* were estimated via isotropic and anisotropic Jeans models. Our main results can be summarized as follows.

1. The proper motions of more than 6000 stars could be measured over a FOV of $\sim 40'' \times 40''$ centered on Sgr A*. The uncertainties of the proper motion velocities in both coordinates are $< 25 \text{ km s}^{-1}$ for 80% of the sources. The complete list is included as online material. Stars that have been identified as early-type are marked in this list because of their peculiar dynamical properties.
2. From a comparison of the proper motions of maser stars as measured in the infrared (stellar cluster at rest) and radio (Sgr A* at rest) reference frames we infer a non-significant relative motion of the radio frame relative to the IR frame of $0.4 \pm 6.4 \text{ km s}^{-1}$ toward east and $8.4 \pm 6.4 \text{ km s}^{-1}$ toward south. The given errors are 1σ uncertainties. This means that there is no detectable proper motion – within the uncertainties of our analysis – between the stellar cluster and the central black hole.
3. The projected radial and tangential velocity dispersions show a clear Keplerian dependence only in the innermost $\sim 0.3 \text{ pc}$.
4. The velocity dispersion of the stars, after exclusion of the early-type stars, is consistent with being isotropic and constant within the measurement uncertainties at projected distances $R > 10''$ out to at least $30''$ from Sgr A*. A caveat is

that the rotation signature of the cluster may mask underlying anisotropy.

5. The NSC rotates parallel to Galactic rotation. This rotation implies that it must have at least partly formed by accretion of gas or star clusters from the galactic disk (see Seth et al. 2008b).
6. We analyze the proper motion data with the aid of isotropic and anisotropic models. The early-type stars with their well known peculiar dynamical behavior (rotation within disk-like structures) are excluded from this analysis. Both models lead to results that are consistent with each other. This supports the conclusion that the NSC is close to isotropic.
7. The proper motion data imply a best-fit black hole mass of $3.6^{+0.2}_{-0.4} \times 10^6 M_\odot$ (68% confidence). A black hole mass of $4.0 \times 10^6 M_\odot$ is consistent with the proper motion data at the 90% level if the stellar velocities are modelled as isotropic, and at the 99% level when anisotropy is allowed. This is the first time that a proper motion mass estimate of Sgr A* is consistent with direct mass estimates from individual stellar orbits.
8. The point mass of the black hole is *not* sufficient to explain the dynamics of the stars in the central parsec. An additional, extended mass is required.
9. The influence of the extended mass on the gravitational potential becomes notable at $R \gtrsim 0.4$ pc. When excluding – probably unphysical – solutions in which the mass density decreases toward the black hole, our isotropic and anisotropic Jeans models require an extended mass of at least $0.5 \times 10^6 M_\odot$ within $r \leq 1$ pc of Sgr A*. If the mass density is proportional to the stellar number density then the stellar mass within 1 pc of Sgr A* preferred by our model is $1.5 \times 10^6 M_\odot$ in the isotropic case and $1.1 \times 10^6 M_\odot$ in the anisotropic case, respectively. The extended mass can be explained by the stellar mass of the cluster.
10. No strong statement can be made on the *distribution* of the extended mass in the central parsec. Shallow or even declining mass densities are preferred by the modelling, but only weakly. A mass density that declines as rapidly as $\rho \sim r^{-2}$ in the central parsec can be securely ruled out.

Acknowledgements. RS would like to acknowledge the Ramón y Cajal programme of the Ministerio de Ciencia e Innovación, Spain. DM was supported by grants AST-0807910 (NSF) and NNX07AH15G (NASA). RS would like to thank Andrea Ghez for enlightening discussions and helpful comments on an early version of this paper.

References

- Alexander, T. 2003, Stars and singularities: stellar phenomena near a massive black hole (The Galactic Black Hole), 246–275
- Alexander, T. 2007, ArXiv e-prints, 708
- Allen, D. A., Hyland, A. R., & Hillier, D. J. 1990, MNRAS, 244, 706
- Bahcall, J. N. & Tremaine, S. 1981, ApJ, 244, 805
- Balcells, M., Graham, A. W., & Peletier, R. F. 2007, ApJ, 665, 1084
- Becklin, E. E. & Neugebauer, G. 1968, ApJ, 151, 145
- Böker, T. 2008, Journal of Physics Conference Series, 131, 012043
- Carollo, C. M., Stiavelli, M., & Mack, J. 1998, AJ, 116, 68
- Catchpole, R. M., Whitelock, P. A., & Glass, I. S. 1990, MNRAS, 247, 479
- Chakrabarty, D. & Saha, P. 2001, AJ, 122, 232
- Christopher, M. H., Scoville, N. Z., Stolovy, S. R., & Yun, M. S. 2005, ApJ, 622, 346
- Côté, P., Piatek, S., Ferrarese, L., et al. 2006, ApJS, 165, 57
- Dejonghe, H. & Merritt, D. 1992, ApJ, 391, 531
- Diolaiti, E., Bendinelli, O., Bonaccini, D., et al. 2000, A&AS, 147, 335
- Eckart, A. & Genzel, R. 1996, Nature, 383, 415
- Eckart, A. & Genzel, R. 1997, MNRAS, 284, 576
- Eckart, A., Genzel, R., Hofmann, R., Sams, B. J., & Tacconi-Garman, L. E. 1993, ApJ, 407, L77
- Eckart, A., Genzel, R., Ott, T., & Schödel, R. 2002, MNRAS, 331, 917
- Eisenhauer, F., Genzel, R., Alexander, T., et al. 2005, ApJ
- Ferrarese, L., Côté, P., Dalla Bontà, E., et al. 2006, ApJ, 644, L21
- Ferrarese, L. & Merritt, D. 2000, ApJ, 539, L9
- Figer, D. F., Gilmore, D., Kim, S. S., et al. 2003, ApJ, 599, 1139
- Freitag, M., Dale, J. E., Church, R. P., & Davies, M. B. 2008, in IAU Symposium, Vol. 245, IAU Symposium, 211–214
- Geballe, T. R., Najarro, F., Rigaut, F., & Roy, J.-R. 2006, ApJ, 652, 370
- Gebhardt, K., Kormendy, J., Ho, L. C., et al. 2000, ApJ, 543, L5
- Genzel, R., Eckart, A., Ott, T., & Eisenhauer, F. 1997, MNRAS, 291, 219
- Ghez, A. M., Pichon, C., Eckart, A., Gerhard, O. E., & Ott, T. 2000, MNRAS, 317, 348
- Genzel, R., Schödel, R., Ott, T., et al. 2003, ApJ, 594, 812
- Genzel, R., Thatte, N., Krabbe, A., Kroker, H., & Tacconi-Garman, L. E. 1996, ApJ, 472, 153
- Ghez, A., Salim, S., Weinberg, N., et al. 2008, ApJ
- Ghez, A. M., Duchêne, G., Matthews, K., et al. 2003, ApJ, 586, L127
- Ghez, A. M., Klein, B. L., Morris, M., & Becklin, E. E. 1998, ApJ, 509, 678
- Ghez, A. M., Morris, M., Becklin, E. E., Tanner, A., & Kremenek, T. 2000, Nature, 407, 349
- Ghez, A. M., Salim, S., Hornstein, S. D., et al. 2005, ApJ, 620, 744
- Gillessen, S., Eisenhauer, F., Trippe, S., et al. 2008, ArXiv e-prints
- Groenewegen, M. A. T., Udalski, A., & Bono, G. 2008, A&A, 481, 441
- Guesten, R., Genzel, R., Wright, M. C. H., et al. 1987, ApJ, 318, 124
- Haller, J. W., Rieke, M. J., Rieke, G. H., et al. 1996, ApJ, 456, 194
- Häring, N. & Rix, H.-W. 2004, ApJ, 604, L89
- Heisler, J., Tremaine, S., & Bahcall, J. N. 1985, ApJ, 298, 8
- Kormendy, J. & Richstone, D. 1995, ARA&A, 33, 581
- Krabbe, A., Genzel, R., Eckart, A., et al. 1995, ApJ, 447, L95
- Lacy, J. H., Achtermann, J. M., & Serabyn, E. 1991, ApJ, 380, L71
- Lampton, M., Margon, B., & Bowyer, S. 1976, ApJ, 208, 177
- Launhardt, R., Zylka, R., & Mezger, P. G. 2002, A&A, 384, 112
- Leonard, P. J. T. & Merritt, D. 1989, ApJ, 339, 195
- Levin, Y. & Beloborodov, A. M. 2003, ApJ, 590, L33
- Lu, J. R., Ghez, A. M., Hornstein, S. D., Morris, M., & Becklin, E. E. 2005, ApJ, 625, L51
- Lu, J. R., Ghez, A. M., Hornstein, S. D., et al. 2006, Journal of Physics Conference Series, 54, 279
- Lu, J. R., Ghez, A. M., Hornstein, S. D., et al. 2008, ArXiv e-prints, 808
- Maness, H., Martins, F., Trippe, S., et al. 2007, ApJ, 669, 1024
- Matthews, L. D., Gallagher, III, J. S., Krist, J. E., et al. 1999, AJ, 118, 208
- McGinn, M. T., Sellgren, K., Becklin, E. E., & Hall, D. N. B. 1989, ApJ, 338, 824
- Merritt, D. 1988, AJ, 95, 496
- Merritt, D., Berczik, P., & Laun, F. 2007, AJ, 133, 553
- Merritt, D. & Ferrarese, L. 2001, ApJ, 547, 140
- Merritt, D. & Szell, A. 2006, ApJ, 648, 890
- Muno, M. P., Pfahl, E., Baganoff, F. K., et al. 2005, ApJ, 622, L113
- Paumard, T., Genzel, R., Martins, F., et al. 2006, ApJ, 643, 1011
- Paumard, T., Maillard, J.-P., & Morris, M. 2004, A&A, 426, 81
- Phillips, A. C., Illingworth, G. D., MacKenty, J. W., & Franx, M. 1996, AJ, 111, 1566
- Reid, M. J. 1993, ARA&A, 31, 345
- Reid, M. J. & Brunthaler, A. 2004, ApJ, 616, 872
- Reid, M. J., Menten, K. M., Trippe, S., Ott, T., & Genzel, R. 2007, ApJ, 659, 378
- Rieke, G. H. & Rieke, M. J. 1988, ApJ, 330, L33
- Rubilar, G. F. & Eckart, A. 2001, A&A, 374, 95
- Schödel, R., Ott, T., Genzel, R., et al. 2003, ApJ, 596, 1015
- Schödel, R., Ott, T., Genzel, R., et al. 2002, Nature, 419, 694
- Schödel, R., Eckart, A., Alexander, T., et al. 2007, A&A, 469, 125
- Schödel, R., Eckart, A., Iserlohe, C., Genzel, R., & Ott, T. 2005, ApJ, 625, L111
- Sellgren, K., McGinn, M. T., Becklin, E. E., & Hall, D. N. 1990, ApJ, 359, 112
- Seth, A., Agüeros, M., Lee, D., & Basu-Zych, A. 2008a, ApJ, 678, 116
- Seth, A. C., Blum, R. D., Bastian, N., Caldwell, N., & Debattista, V. P. 2008b, ApJ, 687, 997
- Tremaine, S., Gebhardt, K., Bender, R., et al. 2002, ApJ, 574, 740
- Trippe, S., Gillessen, S., Gerhard, O. E., et al. 2008, A&A, 492, 419
- Vollmer, B. & Duschl, W. J. 2000, New Astronomy, 4, 581
- Walcher, C. J., Böker, T., Charlot, S., et al. 2006, ApJ, 649, 692
- Walcher, C. J., van der Marel, R. P., McLaughlin, D., et al. 2005, ApJ, 618, 237
- Wehner, E. H. & Harris, W. E. 2006, ApJ, 644, L17
- Weinberg, N. N., Milosavljević, M., & Ghez, A. M. 2005, ApJ, 622, 878
- Zhu, Q., Kudritzki, R. P., Figer, D. F., Najarro, F., & Merritt, D. 2008, ApJ, 681, 1254
- Zucker, S., Alexander, T., Gillessen, S., Eisenhauer, F., & Genzel, R. 2006, ApJ, 639, L21

Appendix A: Alignment of stellar positions to a common reference frame

A.1. Reference frame

We chose to base the reference frame on stellar positions obtained from imaging observations on 1 June 2006. The data are characterized by (a) the largest FOV of all observations used in this work due to large dither offsets and (b) a very low number of saturated stars because of the short integration time used. The data set consists of 80 randomly dithered frames, which allows, in addition, a thorough determination of average stellar positions and their uncertainties via multiple measurements.

In a first step, the lists of point sources identified in the individual exposures (see section 3) were registered relative to the first exposure in the series (which is centered on Sgr A*) by identifying stars common to the frames and determining the relative offsets between the exposures via a least squares fit (uncertainty of the offsets: < 0.01 pixel). The individual lists of stars were subsequently merged to a preliminary common list with average positions and corresponding standard deviations. In order for a star to be included in the common list, it had to be detected in at least 8 independent exposures, so that its positional uncertainty could be reliably estimated and in order to eliminate spurious detections.

A.2. Selection of reference stars

In a second step, transformation reference stars were selected from the preliminary common list of stars. Reference stars were identified by a four-step process: (a) brightness selection ($10.0 < \text{mag}_{K_s} < 17.0$); (b) selection of stars with positional uncertainty < 0.15 pixel; (c) isolation of the stars: the magnitude difference between a potential reference star and any other star within 8 pixels ($0.216''$, corresponding to ~ 3.5 times the FWHM of the PSF) must be at least 3 magnitudes; (d) uniform distribution: final selection of reference stars on a 50×50 pixel ($1.35'' \times 1.35''$) grid (in case there are several potential reference stars per grid field, the star with the smallest positional uncertainty was selected). We thus obtained 932 reference stars for a combined FOV of $\sim 40'' \times 40''$. The brightness selection excludes the brightest stars because they are saturated in some of the frames. The cut-off at the faint end was chosen because of the limited sensitivity of the frames of some observing epochs. The faintest stars may also be frequently affected by systematic offsets due to confusion with nearby resolved and unresolved sources in the dense GC field (see Ghez et al. 2008).

The last two steps in the selection process are important in order to avoid being biased by fields of increased stellar density. In the case of the GC, for example, the density of stars increases toward Sgr A* (see Schödel et al. 2007). It is reasonable to assume that the camera distortion can be described by a well-behaved function. We believe that uniform sampling helps to avoid possible systematic errors. Non-uniform sampling of reference stars would for example lead to a significantly larger number of reference stars detected near Sgr A*. In the central arcseconds there exists a population of early-type stars with known rotation in the plane of the sky (e.g., Paumard et al. 2006). Also, stars in the central arcseconds are subject to larger systematic uncertainties of their positions because of the high stellar density and the presence of numerous bright stars in this region. Ghez et al. (2008) have demonstrated clearly the problem of astrometric errors due to the influence of the unresolved stellar population. The sampling of the reference sources selected by

the above described process is highly uniform, with an average density of 0.5 reference sources per arcsec^2 (see Fig. A.1).

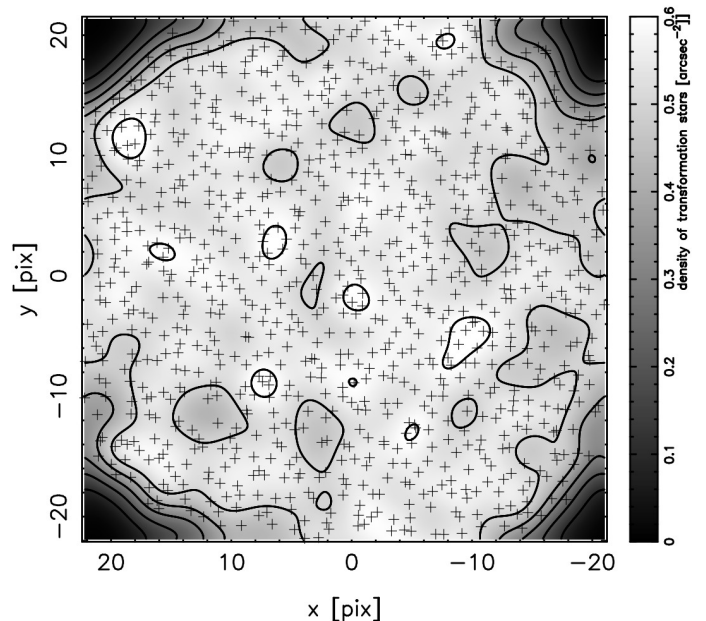


Fig. A.1. Transformation stars selected from the 1 June 2006 observations are marked by crosses on the FOV obtained after combining the dithered exposures. The average density of transformation stars is indicated by the gray shading. Contour lines are drawn at $0.1 \dots 0.6$ stars per arcsec^2 .

Due to possible camera distortions, which have at this point not yet been taken into account, the positions of the reference stars can still be biased and have increased uncertainties. For example, the pixel scale may increase or decrease systematically toward the edges and corners of the detector FOV. Therefore, two effects can be expected: (a) systematic deviations of the relative stellar positions measured on different dithered exposures from the positions as they would be measured with a distortion-free camera; and, as a consequence, (b) increased uncertainty of the positions after combining the source lists.

The systematic deviations of the stellar positions are difficult to correct without precise knowledge of the camera distortions. However, fortunately, if we relax the constraints on *absolute* astrometry, we can still get accurate measurements of the proper motions. If we accept that there may be some residual distortion present in the reference frame, all we have to do is to apply this distortion *consistently* to all epochs. We chose a 3rd order polynomial transform for this purpose (see the following section).

The positional accuracy of the reference stars can be improved by aligning the stellar positions from the 80 exposures of the reference epochs via a 3rd order polynomial transform, instead of a simple shift as done to obtain the preliminary combined list. Hence, the astrometric lists for each exposure were aligned with the first exposure in the series via such a transform. The parameters of the transform were established via a least squares fit, using the reference stars common between the given frames. Finally, all astrometric lists of the individual exposures were combined again to a common list.

Note that the last step does not necessarily eliminate camera distortions. The final reference frame may therefore still have residual astrometric distortions. However the last step increases the precision of the stellar positions in the reference frame sig-

nificantly. We created smooth maps of the positional uncertainties of the stars in the preliminary and final combined lists. As we show in Fig. A.2, the map of the uncertainty of the stellar positions in the final combined list reflects closely the two-dimensional stellar light density. This is exactly what one would expect after possible systematic offsets due to camera distortions have been eliminated successfully and the astrometry of the sources is almost exclusively affected by the structure of the stellar cluster itself. This provides an important cross-check for the validity of our determination of stellar positions in the reference frame.

A.3. Transformation of positions into reference frame

Having established a reference frame with a list of transformation stars, the next step is to transform the stellar positions of the stars detected in each exposure of each epoch to the reference frame. About 400 (the FOV of individual exposures being smaller than the combined FOV of the reference frame) reference stars could be identified in each exposure of our data set. The positions of those stars were then compared with the positions of the corresponding stars in the reference frame in order to determine the parameters (via a least squares algorithm) of a polynomial transformation into the reference frame.

The IDL routine *POLYWARP* was used to calculate the transformation parameters between the stellar positions. The *POLYWARP* procedure is based on a least squares algorithm to solve the coefficients of the following polynomial functions:

$$X_i = \sum_{i,j} K_{x_{i,j}} \cdot X_o^j \cdot Y_o^i \quad (\text{A.1})$$

and

$$Y_i = \sum_{i,j} K_{y_{i,j}} \cdot X_o^j \cdot Y_o^i. \quad (\text{A.2})$$

In these equations X_i and Y_i correspond to the positions of the reference stars in the June 2006 reference frame, and X_o and Y_o are the corresponding positions in the given exposure. We chose a maximum value of 3 for the parameters i and j . The result of the transform is not satisfying for $i, j \leq 1$, with strong systematic effects visible in the error maps (corresponding to the one shown in Fig. A.2). The values $i, j \leq 3$ adopted here produce slightly more accurate results than $i, j \leq 2$ (a reduction of the average positional uncertainties by 5 – 10%). However, this choice does not alter any of the results of this work in a significant way. Choosing an even higher order for the transform is therefore unnecessary and would reduce the precision with which the transformation parameters can be computed.

After transformation of the lists of point sources for each individual frame, the lists corresponding to a given observing epoch were combined. Average fluxes and positions as well as the corresponding uncertainties (the errors on the mean values) could be directly derived from the multiple measurements for each star. Sources that were not detected in multiple exposures were rejected as spurious detections.

Similar to Fig. A.2, Fig. A.3 shows the astrometric uncertainties of the sources detected in the 12 June 2004 epoch after (a) just applying shifts in x and y to combine the lists, and (b) after a full third order transformation into the reference frame. Again, it can be seen how the full polynomial transformation reduces the overall positional uncertainties and their systematic changes across the field considerably.

Appendix B: Offset field

B.1. Proper motions

The methodology applied to extract proper motions from the offset data set was identical to the one for the central field, except that no astrometric positions for the stars were derived. The analysis of the offset proper motions is based on three epochs only (August 2004, July 2005, and May 2008). Stars that were not detected in all three epochs were rejected from the sample. The stellar positions were just transferred roughly into the radio reference frame by applying appropriate offsets. We estimate that the uncertainties of the stellar positions in the offset field may reach up to several $0.1''$. Therefore the proper motions for the offset field are not included in the list in Table B.1. The distances of the stars from Sgr A* were measured by using the NaCo pixel scale.

The number stars with proper motions measured in the offset field, after applying the selection criteria, is 4308. In the left panel of Fig. B.1 we show a plot of reduced χ^2 vs. Ks-band magnitude for the proper motion fits of the offset field data. There is not such a clear correlation between χ_{red}^2 and magnitude as in case of the center field data. We believe that this is mainly caused by (a) the low number statistics of the offset field data (only 3 data points per fit) and (b) by the a factor ~ 2 (see Schödel et al. 2007) lower stellar surface number density in the offset field. The middle and right panels of Fig. B.1 show plots of the distribution of χ_{red}^2 and velocity uncertainty for the offset field data.

Figure B.2 shows an image of the offset field with measured stellar velocities indicated by arrows, after rejecting the stars with the 5% highest reduced χ^2 -values in order to avoid outliers due to the small number of measured positions and thus rather noisy statistics.

B.2. Velocity dispersion

We analysed the proper motion data for the offset field in the same way as the data for the central field. The mean projected radial and tangential velocities and the corresponding velocity dispersions are shown in Fig. B.3. The offset data set covers only a small angular section of the NSC and is highly incomplete at small R . Also, there are only three epochs available for the offset field. Therefore the quality of the offset data does not match the quality of the data on the central field. They have not been used for the further analysis in this work. The mean velocities show a larger scatter than in case of the center field data.

However, we believe that it is important to include the offset data in this work for two reasons. (a) They are centered on a different region of the cluster and can thus serve to detect systematic errors related to the alignment of the astrometric data with the reference epoch. We find that the proper motions for all stars common to the center and offset data agree within their 1σ uncertainties. (b) The offset data sample slightly larger distances from Sgr A*. They support the image of a close to isotropic cluster with a constant velocity dispersion out to projected distances of $R = 30''$ (1.14 pc).

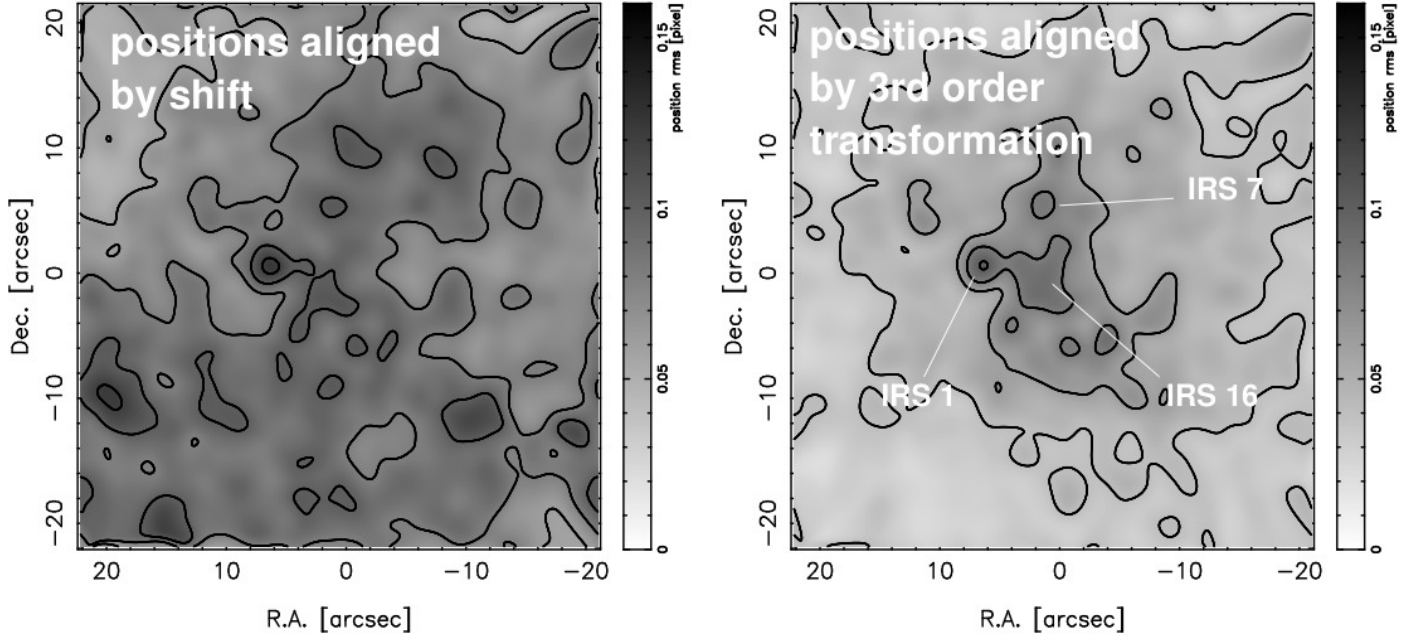


Fig. A.2. Smooth maps of the positional uncertainty of the stars detected in the reference frame from 1 June 2006. After assigning the positional uncertainty of each star to its position, the map was smoothed by applying a Gaussian filter with a FWHM of $2.7''$. The left panel shows the uncertainty of the stellar positions in the FOV after combining the astrometric lists from the individual exposures by applying just shifts in x and y coordinates (preliminary combined list, simple mosaicing). The right hand panel shows the uncertainties after aligning the stellar positions via a 3rd order polynomial fit (final combined list). Contour lines are drawn from 0 to 0.16 pixel at intervals of 0.02 pixel. The transformation reduces the overall uncertainty of the positions and eliminates systematic changes of the positional uncertainty due to camera distortions. The average combined uncertainty of all positions is 0.081 pixel before and 0.045 pixel after the polynomial fit. After applying a polynomial transformation to the stellar positions, the uncertainties correlate with the light density in the field. Light density variations arise from the combined effect of stellar density and the presence of bright stars. This can affect the astrometry via the photometric noise in the halos of the bright stars, especially since the used PSF was truncated (see section 3). The unresolved stellar population will contribute as well to increased photometric noise. This can be seen when comparing the uncertainty map with the mosaic image shown in Fig. 1. One can, for example, see that the areas around IRS 7, IRS 1, or the IRS 16 cluster are clearly visible in the uncertainty map. The uncertainty of the stellar positions decreases with distance from Sgr A*, in correlation with the decreasing stellar density (see Schödel et al. 2007).

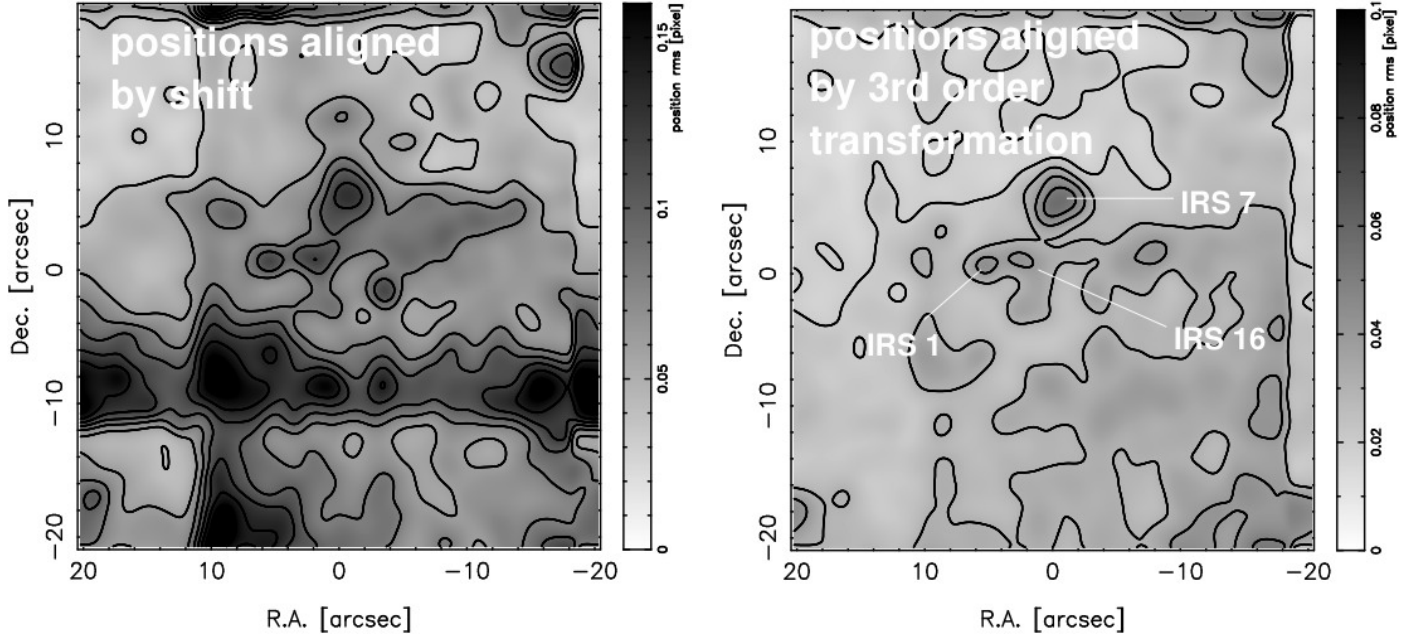


Fig. A.3. Smooth maps of the positional uncertainty of the stars detected in the reference frame from 12 June 2004. The maps were created in the same way as the maps shown in Fig. A.2. The left panel shows the uncertainty of the stellar positions in the FOV after combining the lists of detected stars by applying just shifts in x and y coordinates (simple mosaicing). The right hand panel shows the uncertainties after aligning the stellar positions with the reference frame via a polynomial fit. The transformation reduces the overall uncertainty of the positions and eliminates systematic changes of the positional uncertainty due to camera distortions. The average combined uncertainty of all positions is 0.073 pixel before and 0.027 pixel after the polynomial fit. The overall uncertainty is lower than for the stars in the reference frame because the quality of the AO correction was much better in the observing run on 12 June 2004. Therefore, the correlation of the uncertainty after the polynomial transform with the density of stars and the presence of bright stars is less obvious than in the 2006 data. However, areas of increased positional uncertainty are clearly associated with the IRS 7, IRS 16, and IRS 1. Please note that the different scaling of the maps in the left and right panels. The vertical strip of low uncertainties at the right edge of the FOV is an artifact due to the smoothing and the lack of sources in this area in the data from 12 June 2004

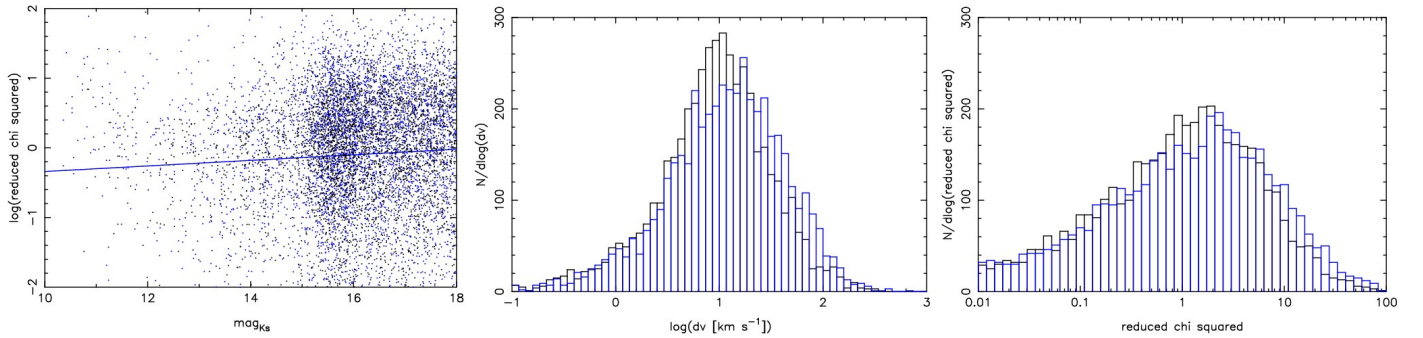


Fig. B.1. Error analysis for offset field data. Left: Plot of $\log(\chi^2)$ vs. Ks-band magnitude. The straight line is a least square linear fit. Middle: Distribution of the velocity uncertainties, black for right ascension and blue for declination. Right: Distribution of the reduced χ^2 values for the linear fits of the data of position vs. time. The black histogram is for the fits in right ascension, the blue histogram for the fits in declination.

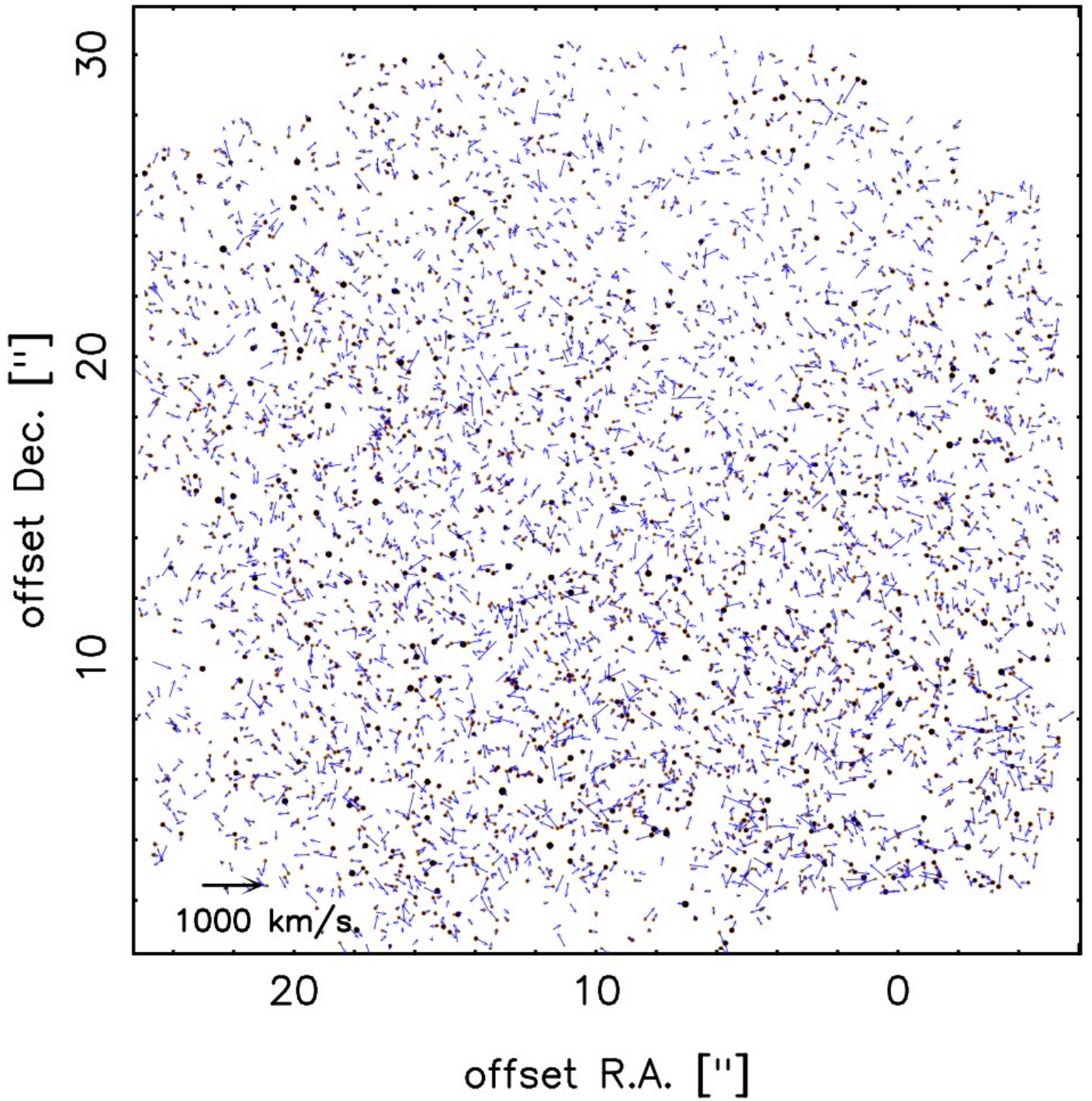


Fig. B.2. Map of stars and measured proper motions of stars in the GC offset field. North is up and east is to the left. Arrows indicate magnitude and direction of the proper motion velocities. The black arrow in the lower left corner indicates the length of a 1000 km s^{-1} arrow. Please note that the map is not strictly astrometric.

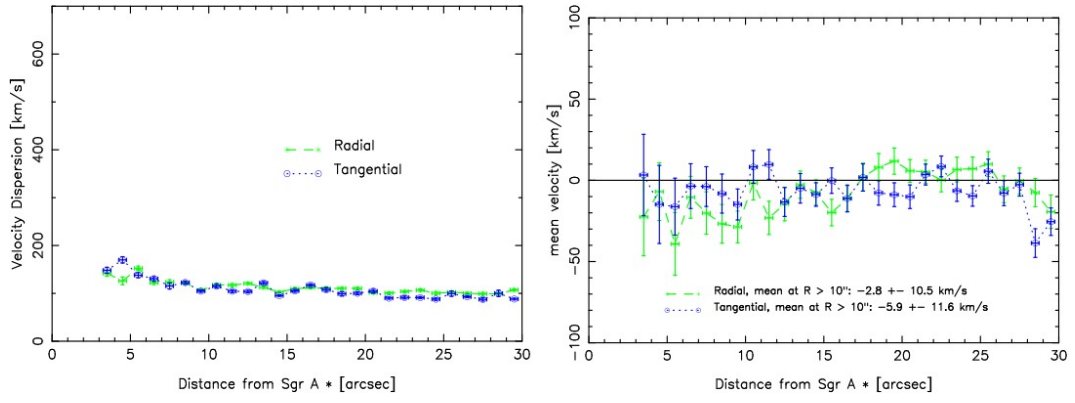


Fig. B.3. Left: Projected radial (green) and tangential (blue) velocity dispersions in the GC nuclear star cluster for the offset field (see Fig. 2). Right: Mean projected radial and tangential velocities vs. projected distance from Sgr A* for the offset field.

Table B.1. List of stars with measured proper motion in the GC. The last column contains the value 1 if a star is contained in the list of spectroscopically identified early-type stars of Paumard et al. (2006) (quality 1 and 2, their Table 2). It contains the value 2 if the star has been identified as an early-type candidate by the photometric analysis of Buchholz, Schödel and Eckart (2009, submitted to A&A).

ID	$R_{p,projected}$ ["]	R.A. ["]	Δ R.A. ["]	Dec. ["]	Δ Dec. ["]	mag _{Ks}	Δ mag _{Ks} [km s ⁻¹]	v _{R.A.} [km s ⁻¹]	Δ v _{R.A.} [km s ⁻¹]	v _{Dec.} [km s ⁻¹]	Δ v _{Dec.}	type
----	--------------------------	-------------	----------------------	-------------	----------------------	-------------------	---	--	---	--	----------------------------	------